

FROME LIVESTOCK

AUCTIONEERS LTD

SALE REPORTS & INFORMATION WEEK ENDING 15TH SEPTEMBER 2023

TOTAL HEAD SOLD: 1666



TRADE AT A GLANCE

| | | | |
|---------------|------------|----------------|------------|
| PRIME CATTLE | TO 278P/KG | CULL COWS | TO 246P/KG |
| PRIME LAMBS | TO 265P/KG | STORE LAMBS | TO £88 |
| DAIRY | TO £2520 | CULL EWES/RAMS | TO £136 |
| REARED CALVES | TO £670 | CALVES | TO £470 |
| STORE STEERS | TO £1600 | STORE HEIFERS | TO £1470 |

Frome Livestock Market, Standerwick, Somerset, BA11 2QB
01373 830033 info@fromelivestock.com

www.fromelivestock.com

Frome Market



REGULAR WEDNESDAY CLINICS

FREE NHS Health Checks every 2nd and 4th Wednesday

FREE Podiatry services every 1st and 3rd Wednesday

The Health Hub is available to all farming or agricultural workers and their families, no matter where you live.

Come and see us for:

- Health and wellbeing checks
- Advice on lifestyle and concerns affecting your emotional wellbeing
- Guidance towards any support you may require in the future

No appointments necessary, just call in and speak to one of our volunteers.



| | |
|---|---|
| HEALTH HUB 9am – 1pm Drop In No appointment needed | FOOT CLINIC 9am – 1pm Please check availability Pre-booking required |
| Wednesday 27th September | Wednesday 4th October |
| Wednesday 11th October | Wednesday 18th October |
| Wednesday 25th October | |

WEDNESDAY 13TH SEPTEMBER 2023

A busy Dairy section this week with 118 head in total to include a genuine dispersal sale selling to a dear trade! More Prime cattle and cull cows forward with cows dearer on the week. A few less lambs about selling to a reasonable trade and cull ewes dearer. A better quality show of calves selling to a dearer trade on the week and some good reared calves forward and sold.

**TOTAL
HEAD
SOLD
1112**

PRIME CATTLE (34) to p/kg or £1901

AUCTIONEER: BRADLEY TOWELL 07496 263916

Start 12.30pm

More Prime cattle and Cull cows forward this week selling to a firmer trade for all weights and grades. Some well-presented consignments of steers and heifers selling well overall with more competition.

| | | | |
|------------------|---|----------|----------|
| TOP PRICE STEER | 260p/kg for an Angus from Rossiter & Son | | |
| TOP PRICE HEIFER | 278p/kg for a Limousin from RMJ & AL Robinson | | |
| UTM FAT TOTALS: | No | MIN P/KG | MAX P/KG |
| STEERS | | | |
| Light 100-500kg | 3 | 182.00 | 248.00 |
| Medium 551-650kg | 5 | 240.00 | 258.00 |
| Heavy 651+ | 4 | 240.00 | 260.00 |
| HEIFERS | | | |
| Light 100-500kg | 3 | 145.00 | 253.00 |
| Medium 501-590kg | 12 | 232.00 | 278.00 |
| Heavy 590+ | 7 | 240.00 | 274.00 |

UTM STEERS (12) Max. 260p/kg & £1901

Steers in demand topping at 260p/kg twice for two super Angus steers with shape and finish from Tom Rossiter grossing £1901 and £1894. Hereford steers to 258p/kg grossing £1648 from Lulworth Castle and South Devon x from the same home to 255p/kg. OTM Hereford steers to 249p/kg and 241p/kg.

THE MARKET CAFÉ IS NOW OPEN

**EVERY WEDNESDAY
AND FRIDAY**

8AM – 3PM



UTM STEERS

| BREED | MAX (p/kg) | VENDOR | MAX (£) | VENDOR |
|-------------|------------|--------------------------------|---------|--------------------------------|
| Angus | 260.00 | Rossiter & Son, Shaftesbury | 1901 | Rossiter & Son, Shaftesbury |
| Hereford | 258.00 | Lulworth Castle Farms, Wareham | 1648 | Lulworth Castle Farms, Wareham |
| South Devon | 256.00 | Lulworth Castle Farms, Wareham | 1622 | Lulworth Castle Farms, Wareham |
| Galloway | 248.00 | M Craggs, Midsomer Norton | 1311 | M Craggs, Midsomer Norton |
| Devon | 241.00 | DM & RC Adams, Dundry | 1130 | DM & RC Adams, Dundry |

UTM HEIFERS (22) Max. 278p/kg & £1723

A good show of heifers topping at 278p/kg for a shapey handyweight Limousin heifer from RMJ & AL Robinson. Heavier Blonde heifers from the same home to 274p/kg for 630kg. Hereford heifers to 258p/kg from RMJ & AL Robinson and Angus to 254p/kg from Lulworth Castle.

UTM HEIFERS

| BREED | MAX (p/kg) | VENDOR | MAX (£) | VENDOR |
|-----------|------------|---------------------------------|---------|---------------------------------|
| Limousin | 278.00 | RMJ & AL Robinson, Pewsham | 1699 | RMJ & AL Robinson, Pewsham |
| Blonde | 274.00 | RMJ & AL Robinson, Pewsham | 1723 | RMJ & AL Robinson, Pewsham |
| Hereford | 258.00 | RMJ & AL Robinson, Pewsham | 1608 | AH Collins, Congresbury |
| Angus | 254.00 | Lulworth Castle Farms, Wareham | 1419 | Lulworth Castle Farms, Wareham |
| Blue | 250.00 | Waddon Farm Ltd, Shepton Mallet | 1723 | Waddon Farm Ltd, Shepton Mallet |
| Simmental | 249.00 | Waddon Farm Ltd, Shepton Mallet | 1627 | Waddon Farm Ltd, Shepton Mallet |
| Friesian | 182.00 | Virgin & Sons, Templecombe | 807 | Virgin & Sons, Templecombe |

CULL COWS (49) Beef to 231p/kg Dairy to 246p/kg**AUCTIONEER: BRADLEY TOWELL 07496 263916 Start 12.30pm**

Cows dearer on the week with more numbers forward. Young Friesian cows to 246p/kg (31mo) and OTM steers to 234p/kg from Lulworth Castle. Good shaped Blue cows from S & M North to 231p/kg for 610kg and 195p/kg grossing £1499 and £1406. Grade 2 Friesian cows to 158p/kg to 175p/kg. Simmental x and Charolais x cows to 165p/kg and 164p/kg respectively. Hereford cows to 160p/kg. Grade 3 cows to 154p/kg and grade 4 cows to 138p/kg. More cows wanted for next week.

| CULL COWS | | | | |
|----------------------------|-----------------------|--------------------------------------|--------------------|--------------------------------------|
| BREED | MAX (p/kg) | VENDOR | MAX (£) | VENDOR |
| Friesian | 246.00 | LKR Farms Ltd, Long Bredy | 1231 | F Pearce & Son, Devizes |
| Blue | 231.00 | S & M North, Chard | 1499 | S & M North, Chard |
| Ayrshire | 170.00 | B & D Dawe-Lane, Shaftesbury | 1110 | B & D Dawe-Lane, Shaftesbury |
| Fleckvieh | 167.00 | Angell Farming Ltd, Shaftesbury | 1007 | Angell Farming Ltd, Shaftesbury |
| Simmental | 165.00 | MJ Iles, Calne | 1135 | MJ Iles, Calne |
| Hereford | 165.00 | Pondhead Ltd, Lyndhurst | 896 | Pondhead Ltd, Lyndhurst |
| Charolais | 164.00 | WS Stitch, Axbridge | 1144 | WS Stitch, Axbridge |
| Angus | 160.00 | MJ Iles, Calne | 980 | MJ Iles, Calne |
| Devon | 159.00 | BWJ Cooke & Son, Chilthorne Domer | 1299 | BWJ Cooke & Son, Chilthorne Domer |
| Jersey | 155.00 | LKR Farms Ltd, Long Bredy | 957 | LKR Farms Ltd, Long Bredy |
| Beef Shorthorn | 140.00 | MJ C Russell, Piddletrenthide | 1395 | MJ C Russell, Piddletrenthide |
| Brown Swiss | 130.00 | Southwick Estate Enterprises LLP | 751 | Southwick Estate Enterprises LLP |
| Dairy Shorthorn | 136.00 | KJ Osborne & Prtrs, Ston Easton | 813 | KJ Osborne & Prtrs, Ston Easton |
| Guernsey | 117.00 | Southwick Estate Enterprises LLP | 745 | Southwick Estate Enterprises LLP |

Steve & Anna Chubb

Trading as
John Cooper Livestock Services



FOR ALL COLLECTIONS PLEASE RING

STEVE: 07831 383392

WILLIAM: 07825 252198

ANNA (Accounts): 07818 401491

Email: johncooperlivestockservices@gmail.com

NFSCO REGISTERED COLLECTOR

ANIMAL BY PRODUCTS REGISTERED COLLECTOR

**ALL CLASSES OF FALLEN STOCK
TAKEN FOR DISPOSAL**

Harvesting knowledge

**Symonds
& Sampson**

ESTABLISHED 1858

With their local understanding and a wealth of experience, Symonds & Sampson's Rural Professional team can help make the grass greener.

Drop in to any of our branches or call and speak to a member of our dedicated Rural Professional Team

symondsandsampson.co.uk



shared
ambition

Helping you plan for the future



Mike Butler/Nick Gooch
01722 337661

***We are Chartered Accountants and
Business Advisers***



**Want to reduce
your antibiotic use?**

Our vets can help!



24/7 veterinary care

01749 601899

fromefarmvets.co.uk

SHEEP (673) Start 10.30am

AUCTIONEER: ROSS WHITCOMBE 07815 985 737

PRIME LAMBS (308) Max 265p/kg £148

Smaller entry of lambs forward which sold to a similar trade on the week. Best lambs to 265p/kg from Dave Green and £148 from AG & MDS Selway. Light lambs to 265p/kg from D Green and £100 from PJ Pobjoy & Son. Heavies to 265p/kg and £130 from AG & MDS Selway. Over weights to 257p/kg and £148 from Thornhill Farms. More lambs needed each week.

Macmillan Cake Sale

Today David Green kindly donated a lamb towards our Macmillan Cake Sale which is to be held on Wednesday 27th September which was later purchased at £150 from PJ King & Son of Gloucester. Our thanks to Dave for giving the lamb and sincere thanks to John King for purchasing. We can confirm that Frome Market will also be gifting £150 towards to the worthy cause.

STORE LAMBS Max (209) £88

A large entry of stores lambs which consisted of mainly smaller types. Best types to £88 from M King of Axbridge. Plenty of larger type lambs all £80+. Lots of smaller lambs forward today which met an easier trade.

CULL EWES (156) Max £136

A cracking entry of ewes forward which sold to another flying trade. Best ewes rocking to £136 from Lewis Tibbs and hard rams to £100 from J & J Bugden & Sons Ltd. Any ewes with meat and weight all £100+. Best Cheviots to £106 from Smith's Farms of Gloucester. Cracking mules £90 from the same good home. Welsh mules to £90 from B Hendy. More ewes needed each week.

Vendors please note that all cull ewes need to be double tagged.

Don't forget Wednesday 20th September – Special Monthly Sheep Sale to include Breeding ewes, Rams, Store lambs & Grazing Ewes.

Entries to hand: 500+ Ewes and 500 store lambs.

Entries close Friday 15th at 3pm!!

| PRIME LAMBS | | |
|--------------------|----------|-----------------------------------|
| KG | £ | Vendor |
| 39.00 | 100.00 | PJ Pobjoy & Son, Norton St Philip |
| 41.00 | 105.00 | D Green, Hambrook |
| 43.50 | 109.00 | R Golledge, Maiden Newton |
| 44.00 | 110.00 | R Golledge, Maiden Newton |
| 45.00 | 111.00 | Lois Farm, Horsington |
| 46.00 | 115.00 | AG & MDS Selway, Stalbridge |
| 47.00 | 116.50 | R Golledge, Maiden Newton |
| 48.00 | 120.00 | J Gibson, Toller Porcorum |
| 49.00 | 130.00 | AG & MDS Selway, Stalbridge |
| 59.00 | 148.00 | AG & MDS Selway, Stalbridge |

FROME LIVESTOCK

AUCTIONEERS LTD

Special Monthly Sheep Sales

To Include:

Breeding Ewes & Rams, Store Lambs & Grazing Ewes

Wednesday 20th September

Entries close 3pm Friday 15th September

Wednesday 18th October

Please Contact:

Ross Whitcombe 07815 985737

Tom Rogers 07384 462288

Mark Ferrett 07702 264502

Bradley Towell 07496 263916

Andrew Frizzle 07977 136863

Clive Peach 07970 620859

Frome Livestock Market, Standerwick,
Frome, Somerset, BA11 2QB Tel 01373 830033 Email: info@fromelivestock.com
Website: <http://www.fromelivestock.com/>

FROME LIVESTOCK

AUCTIONEERS LTD

MONDAY

**18th SEPTEMBER
16th OCTOBER
13th NOVEMBER**

ARE YOU UNDER TB RESTRICTION?

TB RESTRICTED SALES/ORANGE MARKET

Open to all ages and classes of cattle; Prime, Cull, Store and Calves

Cattle must be licenced to these sales and licences must be obtained from Animal Health at least one week before the sale.

ALL VENDORS MUST CONTACT THE MARKET BY THE WEDNESDAY PRIOR TO THE TO THE SALE TO NOTIFY US OF YOUR ENTRIES

Applying for a licence has now changed. A TB204 application must be completed and either emailed to csc.tblicensing@apha.gis.gov.uk or posted to APHA, Polwhele, Truro, Cornwall, TR4 9AD

Please remember to put the first injection date of TB tested cattle on all entry forms

DAIRY Start (118) 11am

AUCTIONEER: TREVOR ROWLAND 07968 480401

Calved Heifers to £1960, Calved Cows to £2520

What a wonderful day in the Dairy ring this week. Firstly, we saw the commercial fresh milk come through which to be honest was lacking in quality against some weeks and was reflective in the price. The sale of the day was the herd dispersal for David & Georgina A'Bear, Seend. Demand for these homebred Friesian Holstein heifers and cows was excellent. There was huge local support for this well respected farming family and prices particularly for the younger freshly calved heifers and cows were at high levels throughout. Plenty of heifers to £1500 and over topping at £1960 for a late August calved heifer.

Younger cows stole the show and were 4 times over £2000 and peaked at a terrific £2,520 for a mid August calved cow in her 3rd lactation. Other 2nd & 3rd lactation cows saw £2131 , £2184 and £2121. All cows and heifers (minus ¾ cows) produced a super average of £1368. In calf heifers and cows equally sought with everyone keen to buy these well bred types. Best early November due heifers to £1785 while several cows over £1300. It was also very pleasing and heartening today to have 5 young next generation farmers bidding around the ring and all under 25 years old! Yearling heifers from the same home also had a strong trade average £646. Overall, a tremendous day in Frome market with more Dairy in the pipeline.

REARED CALVES (48) Start 12.30pm

AUCTIONEER: TOM ROGERS 073844 62288

More stronger sorts forward this week looking a good trade with fine weather and an abundance of grass. Best of the day to Ian Meeker & family for a run of Blue x steers to £670 and heifers to £580. Nice well grown Fleckvieh steers from CJ & CJ Pople to £640, Angus from the same stable to £580. Smart Devon steers from NJ Hiscox looking well sold to £640, £465 and £460 respectively. Tidy Angus steer from regular supporter Stella Sargent & family to £560. Smart younger Blue heifer from Vince Turner to £460.

NEXT REARED CALF SALE: WEDNESDAY 27TH SEPTEMBER

NEXT PIG SALE: WEDNESDAY 20TH SEPTEMBER

ALL PIGS MUST BE PRE-ENTERED TO ENABLE US TO INFORM BUYERS

Garston Farm Skills

Livestock Farmers - *Are you looking to improve competence and receive certification?*

Garston Vets have launched a full programme of courses to help farmers improve the health and welfare of their animals and to meet compliance and assurance scheme requirements. Our courses include:

- Foot trimming and Lameness
- DIY AI
- Youngstock essentials
- Youngstock advanced
- Administering medicines
- Milksure
- Calving course
- Post-calving care
- Drying off
- Mastitis
- Scoring
- Lambing course
- Bespoke smallholder sessions
- TB Biosecurity

Garston Medicine Delivery Service

Our NEW service - *A perfect way to make sure all your medicine needs are up to date, and delivered on time.*

£5.00 (ex VAT) for one off delivery on your zone delivery day

£7.50 (ex VAT) per month for delivery each weekly zone day

To sign up for our monthly delivery service:

Please email hah@garstonvets.co.uk or call **01373 451115** and select *option 3* to speak to Harriet.

There is no minimum term and can be done on a monthly basis.

SOW MUCH POTENTIAL

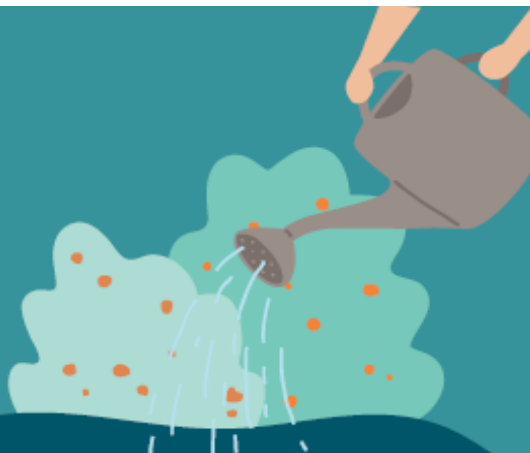
With roots in agriculture,
our specialist legal team are
focused on helping you grow
and diversify your business.



MOGERS
DREWETT

Frome Market | Bath | Wells | Sherborne

0800 533 5349
mogersdrewett.com



OLD M[•]ILL



Financial experts, fuelling ambition

Expert agricultural tax,
accountancy and financial
planning advice

   enquiries@om.uk | 01749 343366 | om.uk



CALVES (195) Starts 9.30am

AUCTIONEER: TIM HECTOR 07818 056 049

TOM ROGERS 07384 462288

Fewer forward but more faces around the ring ensured a firm lift in trade; medium and better sorts in high demand.

CONTINENTAL BULLS TO £470/ HEIFERS TO £285

Plenty forward and a mix of sorts where smaller, plainer calves were harder to place but medium and better calves were well sought. More bulls over £200. A superb entry of Limousins from RGE Durston saw bulls to £470, £468 and £342. Heifers to £285 and £250. Blue bulls topped at £450 from RN Trott with heifers from the same home to £235. Simmental bulls to £360 from LA Lewis. Blonde bulls to £272 from Cross Key Farms Ltd; Charolais to £258 from NR & D Norris.

NATIVE BULLS TO £298/ HEIFERS TO £150

As always a good number forward and better demand for all medium and better calves. Smaller calves especially Arla calves harder to place. A superb Angus bull from GE CJ & CW Allward. Heifers to £140 from GN & KM Langley. Hereford bulls to £198 from J Sprake & Partners with heifers to £150 from the same home.

DAIRY TO £95

Only a handful forward with rearing sorts to £35+, topping at £95 and £84 from DBH Miles.

NEXT REARED CALF SALE: WEDNESDAY 27TH SEPTEMBER

WEEKLY TOP PRICE CALF WINNER!



This week's winner of £25 for the top price Friesian under 41 days was a Holstein to £95 from DBH Miles.

Next week's calf prize will be for a TOP PRICE Native Sired Bull.

Sponsored by Howard & Sons
Dealers for Kubota, Nugent & Ritchie
Devizes Wiltshire SN105SQ Tel: 01380 723986





Shape the future of dairy

AHDB

Have your say on the vital support we offer
Register **now** at **ahdb.org.uk/shape-the-future**

AHDB

Help us Shape the Future of dairy

We're inviting levy payers to register with us to have a say on the vital work we do to support farming.

Registration is quick and easy – visit <https://ahdb.org.uk/shape-the-future> and fill in some basic details. Once we've checked these, we will contact them again in April 2022 when it's time to get their views.

We want as many levy payers as possible to get involved. As a key stakeholder to AHDB, you can help by:

- Encouraging levy payers to register with AHDB and have their say
- Follow our social media channels: Twitter - [@AHDB Dairy](#) & Facebook - [@AHDBDairy](#)
- Like and share our posts or create your own to say why it's important for levy payers to have their say

We are committed to listening to levy payers and industry stakeholders about the challenges they face, and the role that we can play in enabling success in the farming industry. We want to ensure that the levy collected for each sector works hard for the benefit of that sector.

For more information, visit <https://ahdb.org.uk/shape-the-future> .



Symonds & Sampson and Cooper & Tanner are your local approved AMC Agents and can assist you in applying for an AMC business loan.

If you are looking to secure your farm's working capital for five years with no reviews or restructuring your finances over the longer term then an AMC loan could help.

Contact your local AMC Agent for more information:



Edward Dyke FRICS FAAV
Tel: 01258 474261
EDyke@symondsandsampson.co.uk

Chris Eden FRICS FAAV
Tel: 01373 831010
chris@cooperandtanner.co.uk

Secured loans available for business purposes. Minimum AMC standard loan £25,001. Lending is subject to status. Before taking a mortgage you should take independent financial advice from a professional advisor or accountant. The Agricultural Mortgage Corporation plc Registered Office: Charlton Place, Charlton Road, Andover, SP10 1 RE. Registered in England and Wales no 234742. The Agricultural Mortgage Corporation plc is a wholly owned subsidiary of Lloyds Bank plc.



FRIDAY 15TH SEPTEMBER 2023

STORE CATTLE

**TOTAL
HEAD
SOLD
554**

Starts 10.30am

AUCTIONEERS:

TREVOR ROWLAND

07968 480 401

BRADLEY TOWELL

07496 263 916

LESTER WILLIAMS

07778 646 031

STEERS TO £1600 HEIFERS TO £1470

COWS & CALVES

An excellent entry of suckler cows & calves for this sale with wonderful types from Keith & Karen Greenslade, East Chinnock. Their quality Simmental x cows with heifers 5-6mo passed £2050 and those with 2mo steers were close behind at £1880. Nice Hereford cows and calves from Steve Hallen regularly £1230.

BREEDING BULLS

Only 2 forward and although late in the season 3y/o Angus topped at £1420.

GRAZING COWS

Only 1 grazer forward but met with a blistering trade at £1325.

| YOUNG STEERS | | | | YOUNG HEIFERS | | | |
|--------------|------------|------|----------------------------|---------------|------------|------|---|
| BREED | £/ HEAD | AGE | VENDOR | BREED | £/ HEAD | AGE | VENDOR |
| South Devon | 1380 | 15mo | KW & KN Greenslade, Yeovil | Limousin | 1330 | 17mo | PW Sherborne, Chelwood |
| Limousin | 1335 | 16mo | HP & J Flux, IOW | Bazadaise | 1250 | 16mo | K Williams, Newbury |
| Bazadaise | 1280 | 17mo | K Williams, Newbury | Angus | 1140 | 17mo | V & H Christopher & Son, Sturminster Newton |
| Angus | 1245 | 17mo | Farming 4 U Ltd, Salisbury | Simmental | 1005 | 17mo | RF Radstock, Radstock |
| Charolais | 1175 | 17mo | CW House, Lymington | Charolais | 860 | 17mo | Kate Isgar, Axbridge |

YOUNG CONTINENTAL

Not much to say other than a super entry of cattle produced quite an exceptional trade. Everything was at the highest of levels both for suckled and Dairy types alike. A cracking consignment of home bred Dairy Blue x steers and heifers 9mo from JH & GA Breach, Bulkington sold to a marvellous level with bunches of steers to £838 and heifers at £800 and £702. Single suckled Charolais steers 14mo from Kate Isgar easily to £1055. The cream of the show was a consignment of 40 single suckled home bred Limousin steers and heifers from regular vendor Hares Partnership. These very best of types had quite outstanding demand from

start to finish ranging from 10 – 15mo , neither steers or heifers were sold under £1100. Best pens of steers regularly £1150 - £1250, 12mo steers at £1300 and top pen of steers at £1332. Pens of heifers all over £1100 topping at £1195 with single 11mo heifers at £1208 and £1240. 14mo suckled Bazadiase heifers presented by Keith Williams, Newbury were well rewarded at £1250.

ANGUS

Blimey, what an entry of Angus for this sale with this breed commanding 40% of the total cattle which came under the hammer! It is difficult to describe the demand and the energy which these quality beasts created today. There was trade at the highest of levels for Dairy x and Beef bred steers and heifers throughout. Top of the day in the forward steers was from CJ Wells & Sons for their tremendous 22mo steer at £1600 and £1145 for their 11mo steers.; 17mo heifers from the same home at £1145. S Griffin of Salisbury had steers at £1570 and £1380. Another large consignment of Dairy bred Angus x from David Foot Ltd saw their 16-18mo steers at £1195, £1190, £1140 and £1120. Over 100 Angus heifers produced a trade close to that of the steers and so many in excess of £1200. Top spot to Keith & Karen Greenslade whose forward heifers out of Devon x cows reached £1420, closely followed by DL & M Gordge, A Doman & Co, P & J Gould and Kenny Rostigina all with prices over £1300. Plenty of suckled younger heifers £1000-£1100. With leaner framed Dairy x wintering heifers £850-£950. 9mo Dairy x heifers easily to £648. As more purchasers are attending Frome we need to keep the cattle coming to meet demand.

FRIESIAN

Demand outstrips supply with many more wanted following increased demand. Fleckviehs sold well to a fast trade with steers to £1110 (19mo) and heifers to £1100 (19mo) all from V & H Christopher & Son of Sturminster Newton. Holsteins also wanted selling to £1005 (25mo) from Will Stitch, Axbridge , 17mo to £845 from HP & J Flux, IOW and £790 from G Hartley of Hallatrow. Normande steers keenly sought to £975 (19mo) from Kate Isgar, Axbridge.

HEREFORD

Over 70 on offer met an electric trade with fast bidding forcing steers to £1365 (22mo) from J Trott & Sons, Castle Cary, £1345 (23mo) from LP Shackell & Son, Bath and £1175 to £1295 (18 – 20mo) all from S Griffin T/A Farming 4 U Ltd, Salisbury. Good feeding steers wanted and sold from £940 to £980 (18mo) all from West Sussex Agri Ltd, Billingshurst and young steers a massive demand to £800 (10mo) from Kate Isgar, Axbridge. A larger entry of heifers met a tremendous trade with forward heifers topping at £1330 (19mo) from West Sussex Agri Ltd and £1292 (21mo) from J Trott & Sons. Quality bulling heifers wanted and sold to £1150 from A Doman & Co, Bath £110 from G Hartley and £978 from V & H Christopher and £920 from Will Stitch. Younger heifers were keenly sought to £860 from Kate Isgar, £822 from Foremore Ltd and £810 from DG Green of Chichester. Yearling heifers also wanted to £632 (13mo) from SN Ellis & Son of Frome.

FORWARD CONTINENTAL

Tremendous bidding from the packed ringside of buyers forced prices beyond belief. British Blue steers continue to top the trade with several consignments selling well. 25mo steers topped at £1530 from LP Shackell & Son, Bath, 23mo to £1475 from FJ Lessey & Son, Wincanton, 28mo to £1455 from PW CC & JC Gould, Norton Ferris, 22mo to £1455 from CG Purchase & Son Ltd, Wimborne and £1425 from DL & BM Gordge, Dorchester; their similar Charolais steers also sold well to £1395. Younger Limousin steers were also a highlight selling to £1335 (only 16mo) from H & J Flux, IOW and £1332 (only 17mo) from Hares Partnership, Warminster. Younger Bazadaise steers also keenly sought to £1280 from Keith Williams, Newbury and Stabiliser steers to £1298 from Nick Hiscox, Radstock and younger Simmental steers to £1245 from V & H Christopher & Son, Sturminster Newton. Heifers equally in demand with Blue heifers selling from £1438 (21mo) to £1470 (23mo) all from Roger Glover, Yeovil and closely followed at £1440 from LP Shackell & Son and £1395 (23mo) from CG Purchase & Son Ltd. Well presented Charolais heifers also sold well to £1360 (23mo) from FJ Lessey & Son and younger Limousin heifers another highlight selling from £1285 to a massive £1330 (only 17mo) all from PW Sherborne of Chelwood and similar younger Blue heifers to £1305 from Keith Romain of Bath. Other notable prices include Keith Williams' Bazadaise bullers to £1250 (16mo), Simmental bullers to £1190 from Ray Cox, Charolais bullers to £1168 from Clive House and Blue bullers to £1240 from LP Shackell & Son and £1165 from V & H Christopher.

| FORWARD STEERS | | | | FORWARD HEIFERS | | | |
|----------------|--------|------|---|-----------------|--------|------|--------------------------------------|
| BREED | £/HEAD | AGE | VENDOR | BREED | £/HEAD | AGE | VENDOR |
| Angus | 1600 | 22mo | CJ Wells & Sons, Purton | Blue | 1470 | 23mo | RJ Glover, Yeovil |
| Blue | 1530 | 25mo | LP Shackell & Son, Tadwick | Angus | 1420 | 18mo | KW & KN Greenslade, Yeovil |
| Charolais | 1395 | 25mo | DL & BM Gordge, Batcombe | Charolais | 1360 | 23mo | FJ Lessey & Son, Wincanton |
| Hereford | 1365 | 22mo | J Trott & Sons, Castle Cary | Hereford | 1330 | 19mo | West Sussex Agri Ltd, Billinghamurst |
| Stabiliser | 1298 | 19mo | NJ Hiscox, Tadhill | Limousin | 1245 | 27mo | PW Sherborne, Chelwood |
| Simmental | 1245 | 19mo | V & H Christopher & Son, Sturminster Newton | Simmental | 1190 | 20mo | RF Cox, Radstock |
| Limousin | 1200 | 19mo | PW Sherborne, Chelwood | | | | |
| Fleckvieh | 1110 | 19mo | V & H Christopher & Son, Sturminster Newton | | | | |
| Friesian | 1005 | 25mo | WS Stitch, Axbridge | | | | |



FARMING IN PROTECTED LANDSCAPES

A FUNDING PROGRAMME
FOR FARMERS & LANDOWNERS



Open for applications until January 2025

DO YOU HAVE A GREAT IDEA ?

- Promoting connectivity between habitats -
- Increasing in farm biodiversity - Actions to improve soil health -
- Creating wetlands to support a variety of wildlife and reduce flood risk -
- Help the public develop skills in land management -
- Creating walks providing new access opportunities -
- Innovative equipment or farm practices to transition towards regenerative agriculture -

FUNDING
AWARDED

£1,000 to £150K

Cranborne Chase AONB administers this Defra funded programme. Farming in Protected Landscapes runs until the end of March 2025 and is part of Defra's Agricultural Transition Plan.



Cranborne Chase
Area of Outstanding
Natural Beauty

Please have a look at the Farming in Protected Landscapes pages for further information.

www.cranbornechase.org.uk



Your project must meet **at least one** of the outcomes listed below and at least **one of the objectives** of the Cranborne Chase AONB Management Plan. Scan here to view.



CLIMATE

- More carbon is stored and/or sequestered
- Flood risk is reduced
- Farmers, land managers and the public better understand what different habitats and land uses can store carbon and reduce carbon emissions
- The landscape is more resilient to climate change



PEOPLE

- There are more opportunities for people to explore, enjoy and understand the landscape
- There are more opportunities for more diverse audiences to explore, enjoy and understand the landscape
- There is greater public engagement in land management, such as through volunteering
- Farmers and land managers feel increasingly comfortable with providing public goods



NATURE

- There is a greater area of habitat improved for biodiversity
- There is an increase in biodiversity
- There is greater connectivity between habitats
- Existing habitat is better managed



PLACE

- The quality and character of the landscape is reinforced or enhanced
- Historic structures and features are conserved, enhanced or interpreted more effectively
- There is an increase in farm business resilience (you must deliver this equally balanced with other outcomes)

Applications for over £10,000 will be judged by a Local Assessment Panel. The Panel of 8 to 12 people includes representatives from Cranborne Chase AONB, Natural England and the farming and land management community as well as local specialists. The panel meets every 6 to 8 weeks. Applications for less than £10,000 are decided upon by a senior member of the AONB team (who has no prior knowledge of the project). **All projects are to be completed by 31st March 2025.**

Quotes must be received for each element of work in every application where Countryside Stewardship rates or rates from other agricultural support streams do not apply.

Chaplain's Prayer

'Be strong and courageous, do not be afraid, do not be discouraged, for the Lord your God will be with you wherever you go!' 🙏 Joshua 1:9

Arrangements for our Harvest festival celebration here at the market on October 5 at 7pm are well on the way... please put in your diary!?

The Farming Community Network are alive and kicking helping Farmers and their families wherever they can! ❤️ We are not allowed to give direct advice, these are some ways we can help?:-

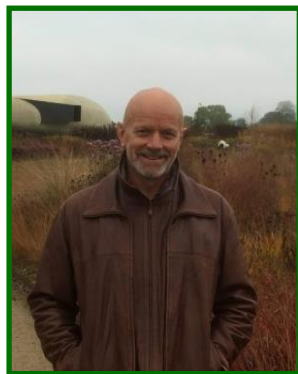
1. Provide local links to Land Agents/farm business consultants
2. Provide links to the Farm Resilience Fund via Gov.uk...
3. Connect with CAB (debt support, benefits check)
4. Connect with RABI ..if **specific** personal welfare costs exist, eg: school uniforms, White goods, temporary staff, (NB they cannot provide finance for general business costs)
5. Addington fund/ forage aid...if severe weather has affected livestock feed availability.
6. Ongoing Pastoral walking alongside with support and encouragement! Even if practical solutions aren't immediately obvious...
7. Connect with local groups or organisations that may be relevant.
8. Recommend 'Farmwell' which contains a wealth of information and further links
9. DEFRA blog on gov.uk contains alot of useful information too..

Here's numbers to ring: FCN: 03000 111 999 help@fcn.org.uk RABI 0808 281 9490, Samaritans 116 123 jo@samaritans.org, Open Mental Health 01823 276892

Remember to check on a neighbour you may not have seen in a while 🐒

Blessings to you, and hopefully see some of you on Wednesday!

Neville Dyke(market Chaplain) mob **07880770887**.



Farm • Commercial • Property • Fleet • Personal • Motor



**We've been insuring the farming community in
Cornwall, Devon, Somerset and Dorset for more than 115 years.**

0345 900 1288 | askus@cornishmutual.co.uk | www.cornishmutual.co.uk



Residential



Rural



Development

**For advice on Development Land
Call our Specialist Team - Tel 01373 455060**

OUR OFFICES

Bridgwater 01278 455255
Castle Cary 01963 350327
Cheddar 01934 740055
Frome 01373 455060
Wells 01749 676524

Glastonbury 01458 831077
London 02078 390888
Midsomer Norton 01761 411010
Standerwick 01373 831010
Commercial 0345 034 7758

Street 01458 840416
Warminster 01985 215579
Shepton Mallet 01749 372200
Wedmore 01934 713296
Salerooms 01373 852419

**COOPER
AND
TANNER**



PAT TOMLINSON
ACCOUNTANCY

BRINGING FARM ACCOUNTS TO LIFE



Accountancy • Tax • Management accounting Budgeting • VAT
Strategic financial advice • Representation with banks • Expert witness work
Making tax digital • Xero Partner • Payroll

enquiries@ptaccountancy.co.uk | www.ptaccountancy.co.uk | 01823 792450

TO CLAIM A **FREE MUG** FILL OUT THE FORM AT:
offers.roxan.co.uk/auction-markets



**SWITCH &
UPGRADE**

No compromise on quality, choice, service or support
when you Switch & Upgrade to any product lines from
ROXAN.



SHEEP TAGS

+ FREE REPLACEMENTS



CATTLE TAGS

+ FREE REPLACEMENTS



& MORE!



JOHN SYMONDS
07766 221 011
john.symonds@datamars.com
South/South West

ROXAN

www.roxan.co.uk

FOLLOW US: 