

# FROME LIVESTOCK

## AUCTIONEERS LTD

### SALE REPORTS & INFORMATION WEEK ENDING 15<sup>TH</sup> SEPTEMBER 2023

### TOTAL HEAD SOLD: 1491



### TRADE AT A GLANCE

PRIME CATTLE	TO 278P/KG	CULL COWS	TO 246P/KG
PRIME LAMBS	TO 265P/KG	STORE LAMBS	TO £88
DAIRY	TO £2520	CULL EWES/RAMS	TO £136
REARED CALVES	TO £670	CALVES	TO £470
STORE STEERS	TO £1600	STORE HEIFERS	TO £1360

Frome Livestock Market, Standerwick, Somerset, BA11 2QB  
01373 830033 [info@fromelivestock.com](mailto:info@fromelivestock.com)

[www.fromelivestock.com](http://www.fromelivestock.com)

# Frome Market



## REGULAR WEDNESDAY CLINICS

**FREE NHS Health Checks every 2nd and 4th Wednesday**

**FREE Podiatry services every 1st and 3rd Wednesday**

The Health Hub is available to all farming or agricultural workers and their families, no matter where you live.

### Come and see us for:

- Health and wellbeing checks
- Advice on lifestyle and concerns affecting your emotional wellbeing
- Guidance towards any support you may require in the future

**No appointments necessary, just call in and speak to one of our volunteers.**



<b>HEALTH HUB 9am – 1pm</b> <b>Drop In</b> <b>No appointment needed</b>	<b>FOOT CLINIC 9am – 1pm</b> <b>Please check availability</b> <b>Pre-booking required</b>
<b>Wednesday 27<sup>th</sup> September</b>	<b>Wednesday 4<sup>th</sup> October</b>
<b>Wednesday 11<sup>th</sup> October</b>	<b>Wednesday 18<sup>th</sup> October</b>
<b>Wednesday 25<sup>th</sup> October</b>	

# WEDNESDAY 13<sup>TH</sup> SEPTEMBER 2023

A busy Dairy section this week with 118 head in total to include a genuine dispersal sale selling to a dear trade! More Prime cattle and cull cows forward with cows dearer on the week. A few less lambs about selling to a reasonable trade and cull ewes dearer. A better quality show of calves selling to a dearer trade on the week and some good reared calves forward and sold.

**TOTAL  
HEAD  
SOLD  
1112**

## PRIME CATTLE (34) to p/kg or £1901

AUCTIONEER: BRADLEY TOWELL 07496 263916

Start 12.30pm

More Prime cattle and Cull cows forward this week selling to a firmer trade for all weights and grades. Some well-presented consignments of steers and heifers selling well overall with more competition.

TOP PRICE STEER	260p/kg for an Angus from Rossiter & Son		
TOP PRICE HEIFER	278p/kg for a Limousin from RMJ & AL Robinson		
UTM FAT TOTALS:	No	MIN P/KG	MAX P/KG
STEERS			
Light 100-500kg	3	182.00	248.00
Medium 551-650kg	5	240.00	258.00
Heavy 651+	4	240.00	260.00
HEIFERS			
Light 100-500kg	3	145.00	253.00
Medium 501-590kg	12	232.00	278.00
Heavy 590+	7	240.00	274.00

## UTM STEERS (12) Max. 260p/kg & £1901

Steers in demand topping at 260p/kg twice for two super Angus steers with shape and finish from Tom Rossiter grossing £1901 and £1894. Hereford steers to 258p/kg grossing £1648 from Lulworth Castle and South Devon x from the same home to 255p/kg. OTM Hereford steers to 249p/kg and 241p/kg.

# THE MARKET CAFÉ IS NOW OPEN

**EVERY WEDNESDAY  
AND FRIDAY**

**8AM – 3PM**



## UTM STEERS

BREED	MAX (p/kg)	VENDOR	MAX (£)	VENDOR
Angus	260.00	Rossiter & Son, Shaftesbury	1901	Rossiter & Son, Shaftesbury
Hereford	258.00	Lulworth Castle Farms, Wareham	1648	Lulworth Castle Farms, Wareham
South Devon	256.00	Lulworth Castle Farms, Wareham	1622	Lulworth Castle Farms, Wareham
Galloway	248.00	M Craggs, Midsomer Norton	1311	M Craggs, Midsomer Norton
Devon	241.00	DM & RC Adams, Dundry	1130	DM & RC Adams, Dundry

## UTM HEIFERS (22) Max. 278p/kg & £1723

A good show of heifers topping at 278p/kg for a shapey handyweight Limousin heifer from RMJ & AL Robinson. Heavier Blonde heifers from the same home to 274p/kg for 630kg. Hereford heifers to 258p/kg from RMJ & AL Robinson and Angus to 254p/kg from Lulworth Castle.

## UTM HEIFERS

BREED	MAX (p/kg)	VENDOR	MAX (£)	VENDOR
Limousin	278.00	RMJ & AL Robinson, Pewsham	1699	RMJ & AL Robinson, Pewsham
Blonde	274.00	RMJ & AL Robinson, Pewsham	1723	RMJ & AL Robinson, Pewsham
Hereford	258.00	RMJ & AL Robinson, Pewsham	1608	AH Collins, Congresbury
Angus	254.00	Lulworth Castle Farms, Wareham	1419	Lulworth Castle Farms, Wareham
Blue	250.00	Waddon Farm Ltd, Shepton Mallet	1723	Waddon Farm Ltd, Shepton Mallet
Simmental	249.00	Waddon Farm Ltd, Shepton Mallet	1627	Waddon Farm Ltd, Shepton Mallet
Friesian	182.00	Virgin & Sons, Templecombe	807	Virgin & Sons, Templecombe

**CULL COWS (49) Beef to 231p/kg Dairy to 246p/kg****AUCTIONEER: BRADLEY TOWELL 07496 263916 Start 12.30pm**

Cows dearer on the week with more numbers forward. Young Friesian cows to 246p/kg (31mo) and OTM steers to 234p/kg from Lulworth Castle. Good shaped Blue cows from S & M North to 231p/kg for 610kg and 195p/kg grossing £1499 and £1406. Grade 2 Friesian cows to 158p/kg to 175p/kg. Simmental x and Charolais x cows to 165p/kg and 164p/kg respectively. Hereford cows to 160p/kg. Grade 3 cows to 154p/kg and grade 4 cows to 138p/kg. More cows wanted for next week.

<b>CULL COWS</b>				
<b>BREED</b>	<b>MAX (p/kg)</b>	<b>VENDOR</b>	<b>MAX (£)</b>	<b>VENDOR</b>
<b>Friesian</b>	<b>246.00</b>	LKR Farms Ltd, Long Bredy	<b>1231</b>	F Pearce & Son, Devizes
<b>Blue</b>	<b>231.00</b>	S & M North, Chard	<b>1499</b>	S & M North, Chard
<b>Ayrshire</b>	<b>170.00</b>	B & D Dawe-Lane, Shaftesbury	<b>1110</b>	B & D Dawe-Lane, Shaftesbury
<b>Fleckvieh</b>	<b>167.00</b>	Angell Farming Ltd, Shaftesbury	<b>1007</b>	Angell Farming Ltd, Shaftesbury
<b>Simmental</b>	<b>165.00</b>	MJ Iles, Calne	<b>1135</b>	MJ Iles, Calne
<b>Hereford</b>	<b>165.00</b>	Pondhead Ltd, Lyndhurst	<b>896</b>	Pondhead Ltd, Lyndhurst
<b>Charolais</b>	<b>164.00</b>	WS Stitch, Axbridge	<b>1144</b>	WS Stitch, Axbridge
<b>Angus</b>	<b>160.00</b>	MJ Iles, Calne	<b>980</b>	MJ Iles, Calne
<b>Devon</b>	<b>159.00</b>	BWJ Cooke & Son, Chilthorne Domer	<b>1299</b>	BWJ Cooke & Son, Chilthorne Domer
<b>Jersey</b>	<b>155.00</b>	LKR Farms Ltd, Long Bredy	<b>957</b>	LKR Farms Ltd, Long Bredy
<b>Beef Shorthorn</b>	<b>140.00</b>	MJ C Russell, Piddletrenthide	<b>1395</b>	MJ C Russell, Piddletrenthide
<b>Brown Swiss</b>	<b>130.00</b>	Southwick Estate Enterprises LLP	<b>751</b>	Southwick Estate Enterprises LLP
<b>Dairy Shorthorn</b>	<b>136.00</b>	KJ Osborne & Prtrs, Ston Easton	<b>813</b>	KJ Osborne & Prtrs, Ston Easton
<b>Guernsey</b>	<b>117.00</b>	Southwick Estate Enterprises LLP	<b>745</b>	Southwick Estate Enterprises LLP

# *Steve & Anna Chubb*

Trading as  
John Cooper Livestock Services



**FOR ALL COLLECTIONS PLEASE RING**

**STEVE: 07831 383392**

**WILLIAM: 07825 252198**

**ANNA (Accounts): 07818 401491**

**Email: [johncooperlivestockservices@gmail.com](mailto:johncooperlivestockservices@gmail.com)**

**NFSCO REGISTERED COLLECTOR**

**ANIMAL BY PRODUCTS REGISTERED COLLECTOR**

**ALL CLASSES OF FALLEN STOCK  
TAKEN FOR DISPOSAL**

# Harvesting knowledge

**Symonds  
& Sampson**

ESTABLISHED 1858

With their local understanding and a wealth of experience, Symonds & Sampson's Rural Professional team can help make the grass greener.

Drop in to any of our branches or call and speak to a member of our dedicated Rural Professional Team

[symondsand sampson.co.uk](http://symondsand sampson.co.uk)



shared  
ambition

# Helping you plan for the future



**Mike Butler/Nick Gooch**  
**01722 337661**

***We are Chartered Accountants and  
Business Advisers***

**Want to reduce  
your antibiotic use?**



**Our vets can help!**



**24/7 veterinary care**

**01749 601899**

**[fromefarmvets.co.uk](http://fromefarmvets.co.uk)**

## **SHEEP (673) Start 10.30am**

**AUCTIONEER: ROSS WHITCOMBE 07815 985 737**

### **PRIME LAMBS (308) Max 265p/kg £148**

Smaller entry of lambs forward which sold to a similar trade on the week. Best lambs to 265p/kg from Dave Green and £148 from AG & MDS Selway. Light lambs to 265p/kg from D Green and £100 from PJ Pobjoy & Son. Heavies to 265p/kg and £130 from AG & MDS Selway. Over weights to 257p/kg and £148 from Thornhill Farms. More lambs needed each week.

### **Macmillan Cake Sale**

Today David Green kindly donated a lamb towards our Macmillan Cake Sale which is to be held on Wednesday 27<sup>th</sup> September which was later purchased at £150 from PJ King & Son of Gloucester. Our thanks to Dave for giving the lamb and sincere thanks to John King for purchasing. We can confirm that Frome Market will also be gifting £150 towards to the worthy cause.

### **STORE LAMBS Max (209) £88**

A large entry of stores lambs which consisted of mainly smaller types. Best types to £88 from M King of Axbridge. Plenty of larger type lambs all £80+. Lots of smaller lambs forward today which met an easier trade.

### **CULL EWES (156) Max £136**

A cracking entry of ewes forward which sold to another flying trade. Best ewes rocking to £136 from Lewis Tibbs and hard rams to £100 from J & J Bugden & Sons Ltd. Any ewes with meat and weight all £100+. Best Cheviots to £106 from Smith's Farms of Gloucester. Cracking mules £90 from the same good home. Welsh mules to £90 from B Hendy. More ewes needed each week.

**Vendors please note that all cull ewes need to be double tagged.**

**Don't forget Wednesday 20<sup>th</sup> September – Special Monthly Sheep Sale to include Breeding ewes, Rams, Store lambs & Grazing Ewes.**

**Entries to hand: 500+ Ewes and 500 store lambs.**

**Entries close Friday 15<sup>th</sup> at 3pm!!**

<b>PRIME LAMBS</b>		
<b>KG</b>	<b>£</b>	<b>Vendor</b>
39.00	100.00	PJ Pobjoy & Son, Norton St Philip
41.00	105.00	D Green, Hambrook
43.50	109.00	R Golledge, Maiden Newton
44.00	110.00	R Golledge, Maiden Newton
45.00	111.00	Lois Farm, Horsington
46.00	115.00	AG & MDS Selway, Stalbridge
47.00	116.50	R Golledge, Maiden Newton
48.00	120.00	J Gibson, Toller Porcorum
49.00	130.00	AG & MDS Selway, Stalbridge
59.00	148.00	AG & MDS Selway, Stalbridge

FROME LIVESTOCK

AUCTIONEERS LTD

## Special Monthly Sheep Sales

To Include:

**Breeding Ewes & Rams, Store Lambs & Grazing Ewes**

**Wednesday 20<sup>th</sup> September**

**Entries close 3pm Friday 15<sup>th</sup> September**

**Wednesday 18<sup>th</sup> October**

Please Contact:

Ross Whitcombe 07815 985737

Tom Rogers 07384 462288

Mark Ferrett 07702 264502

Bradley Towell 07496 263916

Andrew Frizzle 07977 136863

Clive Peach 07970 620859

Frome Livestock Market, Standerwick,  
Frome, Somerset, BA11 2QB Tel 01373 830033 Email: [info@fromelivestock.com](mailto:info@fromelivestock.com)  
Website: <http://www.fromelivestock.com/>

FROME LIVESTOCK

AUCTIONEERS LTD

**MONDAY**

**18<sup>th</sup> SEPTEMBER  
16<sup>th</sup> OCTOBER  
13<sup>th</sup> NOVEMBER**

### ARE YOU UNDER TB RESTRICTION?

## TB RESTRICTED SALES/ORANGE MARKET

**Open to all ages and classes of cattle; Prime, Cull, Store and Calves**

Cattle must be licenced to these sales and licences must be obtained from Animal Health at least one week before the sale.

**ALL VENDORS MUST CONTACT THE MARKET BY THE WEDNESDAY PRIOR TO THE TO THE SALE TO NOTIFY US OF YOUR ENTRIES**

Applying for a licence has now changed. A TB204 application must be completed and either emailed to [csc.tblicensing@apha.gis.gov.uk](mailto:csc.tblicensing@apha.gis.gov.uk) or posted to APHA, Polwhele, Truro, Cornwall, TR4 9AD

**Please remember to put the first injection date of TB tested cattle on all entry forms**

## **DAIRY Start (118) 11am**

**AUCTIONEER: TREVOR ROWLAND 07968 480401**

### **Calved Heifers to £1960, Calved Cows to £2520**

What a wonderful day in the Dairy ring this week. Firstly, we saw the commercial fresh milk come through which to be honest was lacking in quality against some weeks and was reflective in the price. The sale of the day was the herd dispersal for David & Georgina A'Bear, Seend. Demand for these homebred Friesian Holstein heifers and cows was excellent. There was huge local support for this well respected farming family and prices particularly for the younger freshly calved heifers and cows were at high levels throughout. Plenty of heifers to £1500 and over topping at £1960 for a late August calved heifer.

Younger cows stole the show and were 4 times over £2000 and peaked at a terrific £2,520 for a mid August calved cow in her 3<sup>rd</sup> lactation. Other 2<sup>nd</sup> & 3<sup>rd</sup> lactation cows saw £2131 , £2184 and £2121. All cows and heifers (minus ¾ cows) produced a super average of £1368. In calf heifers and cows equally sought with everyone keen to buy these well bred types. Best early November due heifers to £1785 while several cows over £1300. It was also very pleasing and heartening today to have 5 young next generation farmers bidding around the ring and all under 25 years old! Yearling heifers from the same home also had a strong trade average £646. Overall, a tremendous day in Frome market with more Dairy in the pipeline.

## **REARED CALVES (48) Start 12.30pm**

**AUCTIONEER: TOM ROGERS 073844 62288**

More stronger sorts forward this week looking a good trade with fine weather and an abundance of grass. Best of the day to Ian Meeker & family for a run of Blue x steers to £670 and heifers to £580. Nice well grown Fleckvieh steers from CJ & CJ Pople to £640, Angus from the same stable to £580. Smart Devon steers from NJ Hiscox looking well sold to £640, £465 and £460 respectively. Tidy Angus steer from regular supporter Stella Sargent & family to £560. Smart younger Blue heifer from Vince Turner to £460.

**NEXT REARED CALF SALE: WEDNESDAY 27<sup>TH</sup> SEPTEMBER**

**NEXT PIG SALE: WEDNESDAY 20<sup>TH</sup> SEPTEMBER**

**ALL PIGS MUST BE PRE-ENTERED TO ENABLE US TO INFORM BUYERS**

## Garston Farm Skills

**Livestock Farmers** - *Are you looking to improve competence and receive certification?*

Garston Vets have launched a full programme of courses to help farmers improve the health and welfare of their animals and to meet compliance and assurance scheme requirements. Our courses include:

- Foot trimming and Lameness
- DIY AI
- Youngstock essentials
- Youngstock advanced
- Administering medicines
- Milksure
- Calving course
- Post-calving care
- Drying off
- Mastitis
- Scoring
- Lambing course
- Bespoke smallholder sessions
- TB Biosecurity

## Garston Medicine Delivery Service

**Our NEW service** - *A perfect way to make sure all your medicine needs are up to date, and delivered on time.*

**£5.00** (ex VAT) for one off delivery on your zone delivery day

**£7.50** (ex VAT) per month for delivery each weekly zone day

**To sign up for our monthly delivery service:**

Please email [hah@garstonvets.co.uk](mailto:hah@garstonvets.co.uk) or call **01373 451115** and select *option 3* to speak to Harriet.

There is no minimum term and can be done on a monthly basis.

# SOW MUCH POTENTIAL

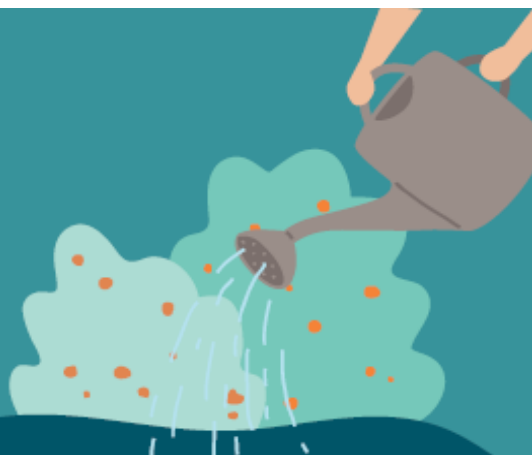
With roots in agriculture,  
our specialist legal team are  
focused on helping you grow  
and diversify your business.



MOGERS  
DREWETT

Frome Market | Bath | Wells | Sherborne

0800 533 5349  
mogersdrewett.com



## OLD M<sup>•</sup>LL



### Financial experts, fuelling ambition

Expert agricultural tax,  
accountancy and financial  
planning advice

   enquiries@om.uk | 01749 343366 | om.uk



## **CALVES (195) Starts 9.30am**

**AUCTIONEER: TIM HECTOR 07818 056 049**

**TOM ROGERS 07384 462288**

Fewer forward but more faces around the ring ensured a firm lift in trade; medium and better sorts in high demand.

## **CONTINENTAL BULLS TO £470/ HEIFERS TO £285**

Plenty forward and a mix of sorts where smaller, plainer calves were harder to place but medium and better calves were well sought. More bulls over £200. A superb entry of Limousins from RGE Durston saw bulls to £470, £468 and £342. Heifers to £285 and £250. Blue bulls topped at £450 from RN Trott with heifers from the same home to £235. Simmental bulls to £360 from LA Lewis. Blonde bulls to £272 from Cross Key Farms Ltd; Charolais to £258 from NR & D Norris.

## **NATIVE BULLS TO £298/ HEIFERS TO £150**

As always a good number forward and better demand for all medium and better calves. Smaller calves especially Arla calves harder to place. A superb Angus bull from GE CJ & CW Allward. Heifers to £140 from GN & KM Langleigh. Hereford bulls to £198 from J Sprake & Partners with heifers to £150 from the same home.

## **DAIRY TO £95**

Only a handful forward with rearing sorts to £35+, topping at £95 and £84 from DBH Miles.

**NEXT REARED CALF SALE: WEDNESDAY 27<sup>TH</sup> SEPTEMBER**

## **WEEKLY TOP PRICE CALF WINNER!**



This week's winner of £25 for the top price Friesian under 41 days was a Holstein to £95 from DBH Miles.

Next week's calf prize will be for a TOP PRICE Native Sired Bull.

**Sponsored by Howard & Sons**  
**Dealers for Kubota, Nugent & Ritchie**  
**Devizes Wiltshire SN105SQ Tel: 01380 723986**





## Help us Shape the Future of dairy

We're inviting levy payers to register with us to have a say on the vital work we do to support farming.

Registration is quick and easy – visit <https://ahdb.org.uk/shape-the-future> and fill in some basic details. Once we've checked these, we will contact them again in April 2022 when it's time to get their views.

We want as many levy payers as possible to get involved. As a key stakeholder to AHDB, you can help by:

- Encouraging levy payers to register with AHDB and have their say
- Follow our social media channels: Twitter - [@AHDB Dairy](#) & Facebook - [@AHDBDairy](#)
- Like and share our posts or create your own to say why it's important for levy payers to have their say

We are committed to listening to levy payers and industry stakeholders about the challenges they face, and the role that we can play in enabling success in the farming industry. We want to ensure that the levy collected for each sector works hard for the benefit of that sector.

For more information, visit <https://ahdb.org.uk/shape-the-future> .



**Symonds & Sampson and Cooper & Tanner are your local approved AMC Agents and can assist you in applying for an AMC business loan.**

**If you are looking to secure your farm's working capital for five years with no reviews or restructuring your finances over the longer term then an AMC loan could help.**

**Contact your local AMC Agent for more information:**



**Edward Dyke FRICS FAAV**  
Tel: 01258 474261  
EDyke@symondsandssampson.co.uk



**Chris Eden FRICS FAAV**  
Tel: 01373 831010  
chris@cooperandtanner.co.uk

Secured loans available for business purposes. Minimum AMC standard loan £25,001. Lending is subject to status. Before taking a mortgage you should take independent financial advice from a professional advisor or accountant. The Agricultural Mortgage Corporation plc Registered Office: Charlton Place, Charlton Road, Andover, SP10 1 RE. Registered in England and Wales no 234742. The Agricultural Mortgage Corporation plc is a wholly owned subsidiary of Lloyds Bank plc.



# FRIDAY 8<sup>TH</sup> SEPTEMBER 2023

## STORE CATTLE

**TOTAL  
HEAD  
SOLD  
379**

**Starts 10.30am**

**AUCTIONEERS:**

**TREVOR ROWLAND** 07968 480 401

**BRADLEY TOWELL** 07496 263 916

**LESTER WILLIAMS** 07778 646 031

**STEERS TO £1600**

**HEIFERS TO £1360**

A cracking entry of store cattle forward for what was expected to be a quieter week with the harvest weather. Some excellent consignments of genuine store cattle selling to a very firm trade again with no sign of trade easing. Stronger large framed cattle dearer on the week with extra confidence in the forward cattle as the beef price increases. Younger farming cattle as dear as ever.

### COWS & CALVES

A nice consignment of Pedigree Hereford cows and calves from Sturminster Newton saw prices very firm at £1120. Breeding young bulls from the same home had great demand at £1280 and £1100.

### BREEDING BULLS

A superb Blue x 13mo rig/bull from the North family had a very strong trade at £1140. Hereford x rigs from HG & RHJ Davey easily sold to £920 and £905.

YOUNG STEERS				YOUNG HEIFERS			
BREED	£/ HEAD	AGE	VENDOR	BREED	£/ HEAD	AGE	VENDOR
Bazadaise	1475	17mo	K Williams, Newbury	Charolais	1195	16mo	CW House, Lymington
Hereford	1285	17mo	S Lloyd-Harris, Bridport	Hereford	1010	17mo	S Lloyd-Harris, Bridport
Charolais	1275	17mo	CW House, Lymington	Angus	990	17mo	RJ Edmunds, Buckland Newton
Angus	1245	17mo	AM & RS Rich, Sherborne	Blue	968	14mo	J Pittard, Ilminster
Sussex	1155	17mo	K Williams, Newbury				

### FRIESIAN

A really good trade in this section which made up 15% of todays excellent entry. Dennis Drake & family had a super run of more British types; their 25mo steers peaked at an amazing £1200 closely followed by FJ Burfitt at £1180. A lovely

entry of younger Friesians 12-13mo from the Drake family regularly over £600 to £625. More good types were wanted this week.

## **YOUNG CONTINENTAL**

Not too many suckled types forward at the moment as it's still early in the season, however those on offer were very well sold through the day. S & M North of Chard had their normal top grade Blue x steers which saw prices to £995 (11mo) and Simmental x from the same home to £1010. A grand consignment of Blue x 13mo Dairy bred steers and heifers from J Pittard and family created fierce demand seeing their steers at £1130 and £1020 while heifers fetched £968. Good Charolais x dairy young Continentals presented by KJ Osborne & Partners were easily sold at £832. A tremendous day at Frome this week!

## **ANGUS**

A massive entry of 169 Angus selling to another explosive trade with all grades wanted and selling to advantage. Forward steers sold well again and topped at a massive £1595 (29mo) from Bill & Valerie Masters of Yeovil and closely followed at £1528 (25mo) from regular vendor Graham Read of Warminster. Younger best grade steers the highlight of the day with quality single suckled steers selling well from £1340 to £1470 (13-17mo) all from Tony Rich & family of Sherborne. Other younger steers also met a good trade to £1275 from Francis Burfitt and £1195 from both FJ Lessey & Son and LP Norman & Sons. The good range of yearling steers sold well from £815 to £885 from David Foot Ltd, £850 from Moxeys of Calne and £812 (11mo) from KJ Osborne & Partners. Quality heifers wanted and sold to £1135 (only 23mo) from Will Weaver & family of Frampton Cotterell. Yearling heifers to £800 (12mo) from David Hiill & family of Shepton Mallett, £730 from LP Norman & Sons and £670 from David Foot Ltd.

## **HEREFORD**


One of the best shows of Herefords seen today with over 100 forward and all sold to a fantastic trade. Top honours of the day go to Bill & Valerie Masters for a single Hereford reaching £1600 (26mo). Similar quality from Brian Trott hit £1500 for a pen of 3 at 21mo. A single steer from SR & CE Moorlen hit £1400. OTM Hereford steers to £1295 for 40mo from West Sussex Agri. A super consignment of suckler bred Hereford steers and heifers from S Lloyd-Harris with conformation and strong frames were very well presented and very well sold. A cracking pen of 4 topped at £1285 (17mo) with others to £1200 and £1195. Herefords topping the heifer section at £1360 from Brian Trott with others from C & J Smart to £1245 and £1225 from S Lloyd-Harris. Younger steers to £950 and £865 (14mo) from SR & CE Moorlen and heifers from the same home to £890 (15mo).

## **FORWARD CONTINENTAL**

What a trade as the autumn demand for numbers strengthens. Fierce bidding encourages a larger entry with several consignments selling to advantage. Will Weavers' Blue steers topped the Continentals and sold to £1500 (25mo) with his Simmental and Blue steers to £1370 (19mo) and £1315 respectively. Quality

reared Simmental steers also a highlight selling from £1395 to £1485 (30mo) all from Bill & Valerie Masters, closely followed at £1475 (only 17mo) for well grown Bazadaise steers from Keith Williams of Newbury. Good conformation Limousin steers met fast bidding selling to £1375 (28mo) from C & J Smart of Pensford. Blue steers sold from £1280 to £1385 (26mo) all from PJ Harvey of Bath. Younger Charolais steers also wanted and sold well to £1275 (17mo) from Clive House of Lymington. Demand outstrips supply of forward Continental heifers with only younger Charolais heifers on offer selling to a massive £1195 (only 16mo) from Clive House and younger Blue heifers to £1005 (only 18mo) in a wonderful consignment from Mr Lloyd-Harris of Bridport.

FORWARD STEERS				FORWARD HEIFERS			
BREED	£/HEAD	AGE	VENDOR	BREED	£/HEAD	AGE	VENDOR
Hereford	1600	26mo	WD & VJ Masters, Ilchester	Hereford	1360	21mo	J Trott & Sons, Castle Cary
Angus	1595	29mo	WD & VJ Masters, Ilchester	Angus	1135	23mo	AE Weaver & Son, Frampton Cotterell
Blue	1500	25mo	AE Weaver & Son, Frampton Cotterell	Blue	1005	18mo	S Lloyd-Harris, Bridport
Simmental	1485	30mo	WD & VJ Masters, Ilchester				
Limousin	1375	28mo	C & J Smart, Pensford				
Friesian	1250	25mo	FJ Burfitt, Warminster				



FROME LIVESTOCK  
AUCTIONEERS LTD

**SUCKLER SALE**

**FRIDAY  
22<sup>nd</sup> SEPT  
10AM**

**26 Purebred & Pedigree Charolais cows & Simmental x cows with Spring born calves at foot HB SS FA**

**25 Hereford x, Angus x & Blue x cows with Spring born Hereford x calves at foot**

**1 Pedigree Limousin Bull 7y/o**

**More entries anticipated**



# FARMING IN PROTECTED LANDSCAPES

A FUNDING PROGRAMME  
FOR FARMERS & LANDOWNERS



Open for applications until January 2025

## DO YOU HAVE A GREAT IDEA ?

- Promoting connectivity between habitats -
- Increasing in farm biodiversity - Actions to improve soil health -
- Creating wetlands to support a variety of wildlife and reduce flood risk -
- Help the public develop skills in land management -
- Creating walks providing new access opportunities -
- Innovative equipment or farm practices to transition towards regenerative agriculture -

FUNDING  
AWARDED

## £1,000 to £150K

**Cranborne Chase AONB** administers this Defra funded programme. Farming in Protected Landscapes runs until the end of March 2025 and is part of Defra's Agricultural Transition Plan.



Cranborne Chase  
Area of Outstanding  
Natural Beauty

Please have a look at the Farming in Protected Landscapes pages for further information.

[www.cranbornechase.org.uk](http://www.cranbornechase.org.uk)



Your project must meet **at least one** of the outcomes listed below and at least **one of the objectives** of the Cranborne Chase AONB Management Plan. Scan here to view.



## CLIMATE

- More carbon is stored and/or sequestered
- Flood risk is reduced
- Farmers, land managers and the public better understand what different habitats and land uses can store carbon and reduce carbon emissions
- The landscape is more resilient to climate change



## PEOPLE

- There are more opportunities for people to explore, enjoy and understand the landscape
- There are more opportunities for more diverse audiences to explore, enjoy and understand the landscape
- There is greater public engagement in land management, such as through volunteering
- Farmers and land managers feel increasingly comfortable with providing public goods



## NATURE

- There is a greater area of habitat improved for biodiversity
- There is an increase in biodiversity
- There is greater connectivity between habitats
- Existing habitat is better managed



## PLACE

- The quality and character of the landscape is reinforced or enhanced
- Historic structures and features are conserved, enhanced or interpreted more effectively
- There is an increase in farm business resilience (you must deliver this equally balanced with other outcomes)

Applications for over £10,000 will be judged by a Local Assessment Panel. The Panel of 8 to 12 people includes representatives from Cranborne Chase AONB, Natural England and the farming and land management community as well as local specialists. The panel meets every 6 to 8 weeks. Applications for less than £10,000 are decided upon by a senior member of the AONB team (who has no prior knowledge of the project). **All projects are to be completed by 31st March 2025.**

Quotes must be received for each element of work in every application where Countryside Stewardship rates or rates from other agricultural support streams do not apply.

## Chaplain's Prayer

'Be strong and courageous, do not be afraid, do not be discouraged, for the Lord your God will be with you wherever you go!' 🙏 Joshua 1:9

Arrangements for our Harvest festival celebration here at the market on October 5 at 7pm are well on the way... please put in your diary!?

The Farming Community Network are alive and kicking helping Farmers and their families wherever they can! ❤️ We are not allowed to give direct advice, these are some ways we can help?:-

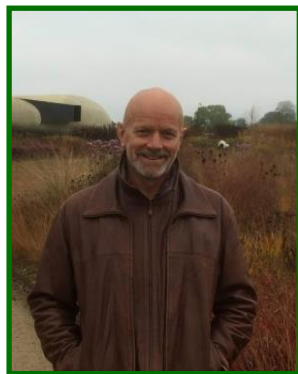
1. Provide local links to Land Agents/farm business consultants
2. Provide links to the Farm Resilience Fund via Gov.uk...
3. Connect with CAB (debt support, benefits check)
4. Connect with RABI ..if **specific** personal welfare costs exist, eg: school uniforms, White goods, temporary staff, (NB they cannot provide finance for general business costs)
5. Addington fund/ forage aid...if severe weather has affected livestock feed availability.
6. Ongoing Pastoral walking alongside with support and encouragement! Even if practical solutions aren't immediately obvious...
7. Connect with local groups or organisations that may be relevant.
8. Recommend 'Farmwell' which contains a wealth of information and further links
9. DEFRA blog on gov.uk contains alot of useful information too..

Here's numbers to ring: FCN: 03000 111 999 [help@fcn.org.uk](mailto:help@fcn.org.uk) RABI 0808 281 9490, Samaritans 116 123 [jo@samaritans.org](mailto:jo@samaritans.org), Open Mental Health 01823 276892

Remember to check on a neighbour you may not have seen in a while 🐒

Blessings to you, and hopefully see some of you on Wednesday!

Neville Dyke(market Chaplain) mob **07880770887**.



Farm • Commercial • Property • Fleet • Personal • Motor



**We've been insuring the farming community in  
Cornwall, Devon, Somerset and Dorset for more than 115 years.**

0345 900 1288 | [askus@cornishmutual.co.uk](mailto:askus@cornishmutual.co.uk) | [www.cornishmutual.co.uk](http://www.cornishmutual.co.uk)



**Residential**



**Rural**



**Development**

**For advice on Development Land  
Call our Specialist Team - Tel 01373 455060**

#### OUR OFFICES

Bridgwater 01278 455255  
Castle Cary 01963 350327  
Cheddar 01934 740055  
Frome 01373 455060  
Wells 01749 676524

Glastonbury 01458 831077  
London 02078 390888  
Midsomer Norton 01761 411010  
Standerwick 01373 831010  
Commercial 0345 034 7758

Street 01458 840416  
Warminster 01985 215579  
Shepton Mallet 01749 372200  
Wedmore 01934 713296  
Salerooms 01373 852419

**COOPER  
AND  
TANNER**



**PAT TOMLINSON**  
ACCOUNTANCY

## BRINGING FARM ACCOUNTS TO LIFE



**Accountancy • Tax • Management accounting Budgeting • VAT**  
**Strategic financial advice • Representation with banks • Expert witness work**  
**Making tax digital • Xero Partner • Payroll**

[enquiries@ptaccountancy.co.uk](mailto:enquiries@ptaccountancy.co.uk) | [www.ptaccountancy.co.uk](http://www.ptaccountancy.co.uk) | 01823 792450

TO CLAIM A **FREE MUG** FILL OUT THE FORM AT:  
[offers.roxan.co.uk/auction-markets](http://offers.roxan.co.uk/auction-markets)



**SWITCH &  
UPGRADE**

No compromise on quality, choice, service or support  
when you Switch & Upgrade to any product lines from  
ROXAN.



### SHEEP TAGS

**+ FREE REPLACEMENTS**



### CATTLE TAGS

**+ FREE REPLACEMENTS**



### & MORE!



**JOHN SYMONDS**  
07766 221 011  
[john.symonds@datamars.com](mailto:john.symonds@datamars.com)  
South/South West

**ROXAN**

[www.roxan.co.uk](http://www.roxan.co.uk)

FOLLOW US: 