

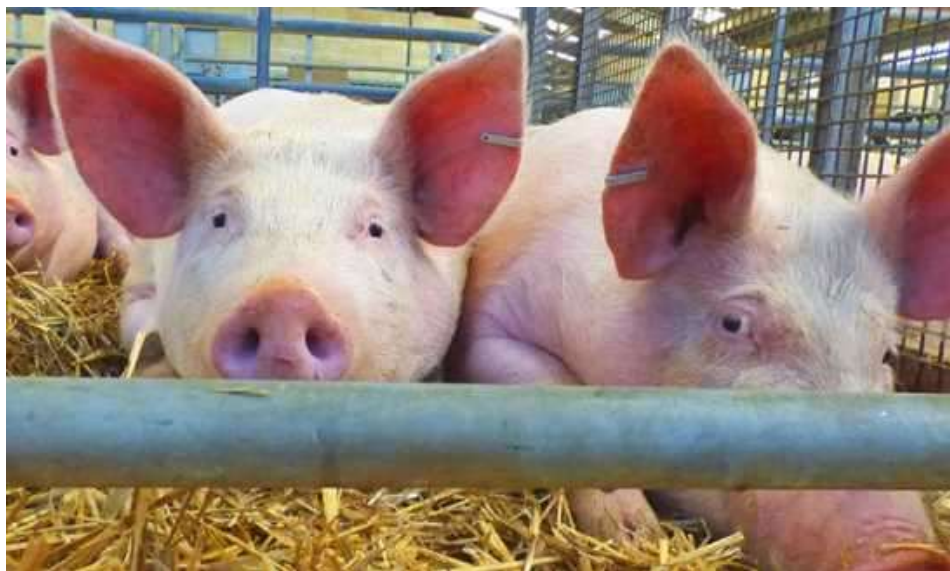
# FROME LIVESTOCK

## AUCTIONEERS LTD

### SALE REPORTS & INFORMATION WEEK ENDING 18<sup>th</sup> NOVEMBER 2022

### TOTAL HEAD SOLD: 1720

### TRADE AT A GLANCE



PRIME CATTLE	TO 226.5P/KG	CULL COWS	TO 197.5P/KG
PRIME LAMBS	TO 276P/KG	STORE LAMBS	TO £86
DAIRY	TO £2080	CULL EWES	TO £119
PIGS	TO £164	CALVES	TO £332
STORE STEERS	TO £1315	STORE HEIFERS	TO £1200

Frome Livestock Market, Standerwick, Somerset, BA11 2QB  
01373 830033 info@fromelivestock.com

[www.fromelivestock.com](http://www.fromelivestock.com)

# Frome Market



## REGULAR WEDNESDAY CLINICS

**FREE NHS Health Checks every 2nd and 4th Wednesday**

**FREE Podiatry services every 1st and 3rd Wednesday**

The Health Hub is available to all farming or agricultural workers and their families, no matter where you live.

### Come and see us for:

- Health and wellbeing checks
- Advice on lifestyle and concerns affecting your emotional wellbeing
- Guidance towards any support you may require in the future

**No appointments necessary, just call in and speak to one of our volunteers.**



<b>HEALTH HUB 9am – 1pm</b> <b>Drop In – no appointment needed</b>	<b>FOOT CLINIC 9am – 1pm</b> <b>Please check availability</b>
<b>Wednesday 23<sup>rd</sup> November</b>  <b>Wednesday 14<sup>th</sup> December</b>	<b>Wednesday 7<sup>th</sup> December</b>  <b>Wednesday 21<sup>st</sup> December</b>

# Helping your ambitions become a reality



shared  
ambition



**Mike Butler/  
Nick Gooch**

**01722 337661**

**We are Chartered Accountants  
and Business Advisers**



We are proud to support farmers across  
England and Wales with paperwork and  
inspections.

"Great people. Great service. Great value."

Richard Richards  
Limousin breeder, Herefordshire

Getting you out of  
the office and back  
in the field.

**CXCS**

If you have a query - big or small - we can  
help. Our services include:

Cross Compliance  
Farm Assurance  
Health and Safety  
Basic Payment Scheme  
Human Resources

01981 590514

[www.cxcs.co.uk](http://www.cxcs.co.uk) | [info@cxcs.co.uk](mailto:info@cxcs.co.uk)

*Steve & Anna Chubb*

Trading as  
John Cooper Livestock Services



**FOR ALL COLLECTIONS PLEASE RING**

**STEVE: 07831 383392**

**WILLIAM: 07825 252198**

**ANNA (Accounts): 07818 401491**

**Email: [johncooperlivestockservices@gmail.com](mailto:johncooperlivestockservices@gmail.com)**

**NFSCO REGISTERED COLLECTOR**

**ANIMAL BY PRODUCTS REGISTERED COLLECTOR**

**ALL CLASSES OF FALLEN STOCK  
TAKEN FOR DISPOSAL**

# WEDNESDAY 16<sup>TH</sup> NOVEMBER 2022

**TOTAL  
HEAD  
SOLD  
1011**

**PRIME CATTLE (49) to 226.50p/kg or £1606**

**AUCTIONEER: GREG RIDOUT 07817 517467 Start 12.30pm**

**Don't forget Frome Fatstock Show 30<sup>th</sup> November. Various classes with schedule available online or from the market office. Entries close 23<sup>rd</sup> November.**

Prime cattle trading at similar levels to last week, but with a far wider variation of types on offer.

<b>TOP PRICE STEER</b>	<b>226.50p/kg for an Angus from LK &amp; C Davies</b>		
<b>TOP PRICE HEIFER</b>	<b>214.50p/kg for a Hereford from MJ Berry</b>		
<b>UTM FAT TOTALS:</b>	<b>No</b>	<b>MIN P/KG</b>	<b>MAX P/KG</b>
<b>STEERS</b>			
Light 100 – 500kg	4	127.50	211.50
Medium 551-650kg	8	204.50	225.50
Heavy 651kg+	6	209.50	226.50
<b>HEIFERS</b>			
Light 100 – 500kg	17	87.50	209.00
Medium 501-590kg	7	164.50	214.50
Heavy 590kg+	7	193.50	211.50

**UTM STEERS (18) Max. 226.50p/kg & £1606**

A good run of Continental types on offer today seeing the best to £1606 from regular vendor John Stainer. Angus cattle still highly sought after with LK & C Davies seeing 226.50p/kg or £1527. Blues to 225.50p/kg from NJ & EM Yandle. Lovely to see the Wallis family's consignment of Ruby Red Devons to a fantastic 221.50p/kg or £1420. Large framed Simmentals to £1503 or 218.50p/kg from Waddon Farm Ltd.

UTM STEERS				
BREED	MAX (p/kg)	VENDOR	MAX (£)	VENDOR
Angus	226.50	LK & C Davies, Glastonbury	1526	LK & C Davies, Glastonbury
Blue	225.50	BJ & EM Yandle, Martock	1606	JC Stainer, Semington
Red Poll	221.50	A Wallis & Sons, Ansty	1419	A Wallis & Sons, Ansty
Sussex	221.00	A Wallis & Sons, Ansty	1255	A Wallis & Sons, Ansty
Devon	219.50	A Wallis & Sons, Ansty	1308	A Wallis & Sons, Ansty
Simmental	218.50	Waddon Farm Ltd, Shepton Mallet	1503	Waddon Farm Ltd, Shepton Mallet
Hereford	211.50	PJ Harvey, Bishop Sutton	1431	PJ Harvey, Bishop Sutton

### UTM HEIFERS (31) Max. 214.50p/kg & £1361

Most forward today being Native bred types, made up of mainly Herefords & Angus. Waddon Farm Ltd saw the top price of the day at £1362 for a sweet looking Angus. Mike Berry had top price Herefords at 214.50p/kg and Angus at 211p/kg whilst Richard Gregory saw his Hereford sail away to £1332. Fleckvieh heifers from John Stainer to £1330 or 205.50p/kg showing weight is still coming to money. Overage heifers from WE Pope returning at £1369.

UTM HEIFERS				
BREED	MAX (p/kg)	VENDOR	MAX (£)	VENDOR
Hereford	214.50	MJ Berry, Castle Cary	1332	R & J Gregory, Kingsworthy
Angus	211.00	MJ Berry, Castle Cary	1361	Waddon Farm Ltd, Shepton Mallet
Fleckvieh	205.50	JC Stainer, Semington	1329	JC Stainer, Semington

**CULL COWS (88) Beef to 197.50p/kg Dairy to 173.50p/kg**

**AUCTIONEER: GREG RIDOUT 07817 517467 Start 12.30pm**

**Don't forget Frome Fatstock Show 30<sup>th</sup> November. Various classes with schedule available online or from the market office. Entries close 23<sup>rd</sup> November.**

Again we have seen further deadweight reductions but the trade remains on fire. Limousin cows selling to 197.50p/kg from Morton Farm Partnership and Piddletrenthide Farms' Herefords to £1438. The entry today did certainly cater for all purchasers with smaller, plainer crossbred cows forward through to heavy meat cows. Plenty of cows trading upwards of 150p/kg and regularly exceeding 160p/kg for better sorts. A terrific run from Piddletrenthide Farms take the honours of top price Herefords at £1438 with others at £1246, £1122 and Angus at £1056. Beef Shorthorns to 155.50p/kg or £1165 from WE Pope and Charolais cows to similar levels at £1154 from KG Butt.

Dairy types saw Sparsholt College's cows max at 164.50p/kg or £1300 with LW & RJ Wyatt & Sons' British Friesian command £1184 or 173.50p/kg. Smaller, lighter framed grazing cows still continue to make 120p/kg+ even with very little shape, far in front of what you would receive on the deadweight.

### **BULLS (4) Max. 144.50p/kg & £1472**

Cull bulls to 144.50p/kg from P & J Dennison Ltd for their 938kg Hereford and £1473 from Piddletrenthide Farms for their 1079kg Angus.



**Harvesting knowledge**

Symonds & Sampson  
ESTABLISHED 1858

With their local understanding and a wealth of experience, Symonds & Sampson's Rural Professional team can help make the grass greener.

Drop in to any of our branches or call and speak to a member of our dedicated Rural Professional Team

[symondsandsampson.co.uk](http://symondsandsampson.co.uk)

CULL COWS				
BREED	MAX (p/kg)	VENDOR	MAX (£)	VENDOR
Limousin	197.50	Morton Farm Prtrs, Thornbury	1169	Morton Farm Prtrs, Thornbury
Hereford	173.50	Piddletrenthide Farms, Dorchester	1438	Piddletrenthide Farms, Dorchester
Friesian	173.50	LW & RJ Wyatt & Sons, Bath	1299	Sparsholt College, Winchester
Simmental	168.50	WE Pope, Blandford	1066	Sparsholt College, Winchester
Angus	162.50	Small Bros, Charterhouse	1055	Piddletrenthide Farms, Dorchester
Blue	162.50	AL & DM Sage & Son, Claverton	991	AL & DM Sage & Son, Claverton
Dairy Shorthorn	157.50	KJ Osborne & Prtrs, Ston Easton	990	KJ Osborne & Prtrs, Ston Easton
Beef Shorthorn	155.50	WE Pope, Blandford	1164	WE Pope, Blandford
Charolais	153.50	KG Butt, Eastleigh	1154	KG Butt, Eastleigh



## DIRECT SALES SERVICE

FROME LIVESTOCK AUCTIONEERS LTD ARE PLEASED TO NOW OFFER A

## DIRECT TO SLAUGHTER SERVICE

- All classes and grades taken (including TB Restricted)
- Both UK and Foreign imported cattle
- Guaranteed and prompt payment
- No obligation advice and Fieldsman Service

### CONTACT DETAILS

Mark Ferrett 07702 264502 or Tom Rogers 07384 462288



FROME AND DISTRICT CHRISTMAS FATSTOCK SOCIETY

# **FROME FATSTOCK SHOW**



## **WED 30th NOVEMBER 2022**

**CLASSES FOR  
HANDLED & UNHANDLED BEEF CATTLE,  
BARREN COWS, SHEEP, PIGS,  
(INC YOUNG FARMERS CLASSES),  
AND CALVES**

**ENTRIES CLASSES 1-23 CLOSE**

**WEDNESDAY 23rd NOVEMBER**

**CALF ENTRIES ACCEPTED PRIOR TO 10am SHOW MORNING**

**SCHEDULES & ENTRY FORMS AVAILABLE FROM  
THE MARKET OFFICE – 01373 830033 OR ONLINE**

**[www.fromelivestock.com](http://www.fromelivestock.com) or [www.cooperandtanner.co.uk](http://www.cooperandtanner.co.uk)**

**HANDLED CATTLE CLASSES:**

- 1 BEST NATIVE BREED STEER OR HFR
- 2 NOVICE CLASS FOR BEST STR OR HFR
- 3 BEST CONTINENTAL STEER
- 4 BEST CONTINENTAL HEIFER
- 5 BEST STEER OR HFR BRED & REARED
- 6 YF BEST BEEF BRED STEER OR HFR

**UNHANDLED CATTLE CLASSES:**

- 7 BEST CONTINENTAL STEER
- 8 BEST CONTINENTAL HEIFER
- 9 BEST NATIVE BREED STEER
- 10 BEST NATIVE BREED HEIFER
- 11 NOVICE CLASS FOR BEST BEAST
- 12 BEST YOUNG FARMERS BEAST
- 13 BEST DAIRY BRED BARREN COW
- 14 BEST DUAL PURPOSE BRED BARREN COW
- 15 BEST BEEF BRED BARREN COW

**LAMB & PIG CLASSES:**

- 16 BEST PEN 3 LAMBS NOT EXCEEDING 42kg LW
  - 17 BEST PEN OF 3 LAMBS OVER 42kg LW
  - 18 BEST PEN OF 3 LAMBS Sired BY A NATIVE RAM
  - 19 BEST YOUNG FARMERS PEN OF 3 LAMBS
  - 20 BEST PEN OF 3 CULL EWES \*\*\* NEW CLASS \*\*\*
  - 21 BEST PAIR OF PIGS NOT EXCEEDING 87kg LW
  - 22 BEST PAIR OF PIGS OVER 87kg
  - 23 BEST PAIR OF NATIVE PIGS (ANY WEIGHT)
- NON SHOW PIGS MUST BE PRE-BOOKED**

**CALF CLASSES:**

- 24 BEST CONTINENTAL CALF
- 25 BEST NATIVE BREED CALF
- 26 BEST DUAL PURPOSE CALF

**CALVES DO NOT NEED TO BE PRE-ENTERED –  
ENTRIES PRIOR TO 10am SHOW MORNING**

**We can design a  
bespoke veterinary  
package for your  
farm**



**Book a consultation today!**



**24/7 veterinary care**

**01749 601899**

**[fromefarmvets.co.uk](http://fromefarmvets.co.uk)**



FROME LIVESTOCK

AUCTIONEERS LTD

12 DEC

16 JAN

**MONDAY**

**ARE YOU UNDER TB RESTRICTION?**

**TB RESTRICTED SALES/ORANGE MARKET**

**Open to all ages and classes of cattle; Prime, Cull, Store and Calves**

Cattle must be licenced to these sales and licences must be obtained from Animal Health at least one week before the sale.

**ALL VENDORS MUST CONTACT THE MARKET BY THE WEDNESDAY PRIOR TO THE TO THE SALE TO NOTIFY US OF YOUR ENTRIES**

Applying for a licence has now changed. A TB204 application must be completed and either emailed to [csc.tblicensing@apha.gis.gov.uk](mailto:csc.tblicensing@apha.gis.gov.uk) or posted to APHA, Polwhele, Truro, Cornwall, TR4 9AD

**Please remember to put the first injection date of TB tested cattle on all entry forms**

**FROME MARKET CHRISTMAS OPENING HOURS**

<b>WEDNESDAY 21<sup>ST</sup> DECEMBER</b>	<b>OPEN AS USUAL</b>
<b>FRIDAY 23<sup>RD</sup> DECEMBER</b>	<b>CLOSED</b>
<b>WEDNESDAY 28<sup>TH</sup> DECEMBER</b>	<b>OPEN AS USUAL</b>
<b>FRIDAY 30<sup>TH</sup> DECEMBER</b>	<b>CLOSED</b>
<b>WEDNESDAY 4<sup>TH</sup> JANUARY</b>	<b>OPEN AS USUAL</b>





**Symonds & Sampson and Cooper & Tanner are your local approved AMC Agents and can assist you in applying for an AMC business loan.**

**If you are looking to secure your farm's working capital for five years with no reviews or restructuring your finances over the longer term then an AMC loan could help.**

**Contact your local AMC Agent for more information:**



**Edward Dyke FRICS FAAV**  
Tel: 01258 474261  
EDyke@symondsandsampson.co.uk



**Chris Eden FRICS FAAV**  
Tel: 01373 831010  
chris@cooperandtanner.co.uk

Secured loans available for business purposes. Minimum AMC standard loan £25,001. Lending is subject to status. Before taking a mortgage you should take independent financial advice from a professional advisor or accountant. The Agricultural Mortgage Corporation plc Registered Office: Charlton Place, Charlton Road, Andover, SP10 1RE. Registered in England and Wales no 234742. The Agricultural Mortgage Corporation plc is a wholly owned subsidiary of Lloyds Bank plc.





## **SHEEP (523) Start 10.30am**

**AUCTIONEER: ROSS WHITCOMBE 07815 985 737**

### **PRIME LAMBS Max 276p/kg £130**

**Don't forget Frome Fatstock Show 30<sup>th</sup> November, various classes, schedule available online or market office, entries close 23<sup>rd</sup> November.**

An easier trade on the week which is on par with other centres averaging around the 242p/kg. Feather weight lambs to 252p/kg and £75.50 from Gould & Son of Launcherley. Light weights to 265p/kg and £99.50 from P Brewer. Handy weights to 276p/kg from P Brewer and £114 from Pat Apsey. Heavies to 252p/kg from Lordswood Farming Partnership and £125 from RW & AM Hunter. More lambs needed each week to keep buyers support.

KG	£	Vendor
40.50	105.00	P Brewer, Shaftesbury
42.50	111.00	A Roberts, Leigh on Mendip
43.00	114.00	PG Apsey, Wincanton
46.50	117.00	Lordswood Farming Prtrs, Chelwood
48.00	120.00	Gould & Son, Launcherley
50.00	125.00	RW & AM Hunter, Chichester
64.00	130.00	Gould & Son, Launcherley

### **CULL EWES & RAMS (105) Max £119**

A larger entry of cull ewes which sold to a fast trade for all presented. Best to £119 from SA Bishop who also topped the ram section with a worked Texel ram topping at £90. Any ewes with strength or power all £85+. Leaner ewes to £60+. Fit Welsh ewes to £60. More ewes could have been sold to the advantage.

### **STORE LAMBS (175) Max £86**

A larger entry of store lambs which sold to a flying trade for every lamb entered. Best lambs to £86 from P Brewer and NG Tucker & Son. Any lambs with strength or power all £78+. Only the very small lambs under £70. More lambs are needed.

## **VENDORS**

**Please ensure your entry forms are completed correctly and signed ensuring that TB test dates (1<sup>st</sup> day of injection) is complete, along with sire names in full & farm assurance if applicable.**

## **DAIRY (22) Start 11am**

**AUCTIONEER: TREVOR ROWLAND 07968 480401**

### **Calved Heifers to £2,080**

Trade continuing to be firm throughout and more quality wanted this week. Good well presented top sorts were “on the money” with Herby Masters & family seeing freshly calved home bred Friesian Holstein heifers to £2080. Richard & John Leigh saw their home bred Norwegian x Friesian heifers peak at £1690. This week saw a nice consignment of Jan/Feb 2y/o down calving heifers from Compton Manor Partnership all created a very firm trade with Friesian Holsteins at £1200 and Red & White Shorthorns at £1160.

## **PIGS (197) Start 10.15am**

**AUCTIONEER: WILL WALLIS 07833 453482**

**Don't forget Frome Fatstock Show 30<sup>th</sup> November, various classes, schedule available online or market office, entries close 23<sup>rd</sup> November.**

### **FAT PIGS (92)**

Trade for the best quality still good despite reports of falling deadweight prices. A much larger entry this week with a good line up of buyers. The best heavies to £154 and £140 for K Hickery. A top run from PB Weeks of medium weights to £149, £132 twice and £126. Best mediums to £136 and £134 from GW Ham. A good entry from S & S Gould to £122.

### **STORE PIGS (63)**

Fewer stores forward this week. Trade similar with young White weaners to £27 from PG Snell & Sons Stronger stores to £30 from L Jefferson and £80 for some smart coloured stores from I Carter. Gloucester stronger stores to £90 from Lady Rothermere.

### **BREEDING PIGS (20)**

Young Oxford Sandy & Black sow with 6 piglets to £98 from E & W Holloway.

### **CULL SOWS & BOARS (22)**

No larger sows this week; best to £164 from MW & SE Wooldridge, smaller younger sows to £130 from RJ Phelps. Old cull boars to £97 from Frampton Pig Farms, Dorset.

**NEXT PIG SALE: WEDNESDAY 30<sup>TH</sup> NOVEMBER**

**NEXT REARED CALF SALE: WEDNESDAY 23<sup>RD</sup> NOVEMBER**

**FROME LIVESTOCK MARKET LOOK FORWARD TO  
WELCOMING YOU TO UNIT 8**



**Mole Valley**  
**FARMERS**  
**FROME**

**COMING  
SOON!**

**JOIN US ON THE 30TH OF NOVEMBER  
2022 FOR OUR LAUNCH EVENT!**



**Committed to**  
**UK AGRICULTURE**

## Garston Farm Skills

**Livestock Farmers** - *Are you looking to improve competence and receive certification?*

Garston Vets have launched a full programme of courses to help farmers improve the health and welfare of their animals and to meet compliance and assurance scheme requirements. Our courses include:

- Foot trimming and Lameness
- DIY AI
- Youngstock essentials
- Youngstock advanced
- Administering medicines
- Milksure
- Calving course
- Post-calving care
- Drying off
- Mastitis
- Scoring
- Lambing course
- Bespoke smallholder sessions
- TB Biosecurity

## Garston Medicine Delivery Service

**Our NEW service** - *A perfect way to make sure all your medicine needs are up to date, and delivered on time.*

**£5.00** (ex VAT) for one off delivery on your zone delivery day

**£7.50** (ex VAT) per month for delivery each weekly zone day

**To sign up for our monthly delivery service:**

Please email [hah@garstonvets.co.uk](mailto:hah@garstonvets.co.uk) or call **01373 451115** and select *option 3* to speak to Harriet.

There is no minimum term and can be done on a monthly basis.



FROME LIVESTOCK

AUCTIONEERS LTD

## SUCKLER SALE

WEDNESDAY  
23<sup>RD</sup> NOVEMBER  
2pm

### **Herd Dispersal of 44 Aberdeen Angus Suckler Cows comprising of:**

- 25 Pedigree Aberdeen Angus Cows
- 10 Purebred Aberdeen Angus Cows
- 9 Beef Shorthorn x & Limousin Cows

Herd ages; all due to Pedigree Angus Bull, calving March/April 2023

PD 06.10.22 More details at time of sale  
Mainly bred from "Nightingale" bloodlines.

### **Herd Reduction of:**

- 2 Pedigree Aberdeen Angus Bulls 17mo  
Hayside Prince Albert & Prince George
- 1 Pedigree Aberdeen Angus Bull 3 ½ y/o Rodmead Jester Eric
- 1 Pedigree Aberdeen Angus In-calf Heifer due May 2023 to  
Rodmead Jester Eric
- 2 Pedigree Aberdeen Angus In-calf Cows due May 2023 to  
Rodmead Jester Eric with Pedigree Angus Calves at foot
- Naturally reared, grass fed, BVD & Johnes Tested clear

### **Herd Dispersal of:**

- 10 Pedigree Dexter Cows & Calves
- 1 Pedigree Dexter Bull

### **Other entries to include:**

- 1 Pure Bred Parthenais Bull 16mo
- 1 Parthenais Cow 7y/o PD 5mo to above Bull with her  
5mo Parthenais Steer Calf
- 1 Charolais x Heifer 3y/o
- 2 Charolais x Cows 10/11y/o
- 6 Saler x Cows 6-11y/o
- 1 Luig x Cow 6y/o
- All ran with Parthenais Bull

- 1 Pedigree Aberdeen Angus Bull 4 ½ y/o

**MORE ENTRIES ANTICIPATED AND WELCOME**

Frome Livestock Market, Standerwick, Somerset, BA11 2QB

01373 830033 [info@fromelivestock.com](mailto:info@fromelivestock.com)

[www.fromelivestock.com](http://www.fromelivestock.com)

# HARVEST YOUR FUTURE

With roots in agriculture,  
our specialist legal team  
are committed to the  
next chapter in your  
family farming business.



MOGERS  
DREWETT

Frome Market | Bath | Wells | Sherborne



0800 533 5349

[mogersdrewett.com](http://mogersdrewett.com)

## OLD M<sup>•</sup>LL



### Financial experts, fuelling ambition

Expert agricultural tax,  
accountancy and financial  
planning advice

   [enquiries@om.uk](mailto:enquiries@om.uk) | 01749 343366 | [om.uk](http://om.uk)



**CALVES (179) Starts 9.30am**

**AUCTIONEER: TIM HECTOR 07818 056 049**

**Don't forget Frome Fatstock Show 30<sup>th</sup> November, various classes, schedule available online or market office, entries 41 days and under on show day.**

Numbers back and a distinct lack of quality throughout the day. Trade overall improved on last week with more buyers around the ring.

### **CONTINENTAL BULLS TO £332/ HEIFERS TO £192**

Plenty forward; almost all Blues with very few other breeds offered. Mainly smaller, medium sorts through the ring with trade selective but more buyers forward. A good run of Limousins from Pete Turner saw bulls to £332, heifers to £192, Blue bulls to £240 from J & S Cartledge and heifers to £168 from LR & CJ Tuffin. A Charolais bull to £180 from Daniell & Hole Ltd.

### **NATIVE BULLS TO £192/ NATIVE HEIFERS TO £182**

More than half the entry were Native sired and a very mixed trade, no first quality sorts forward and trade did not reflect quality for parts of the day. Angus bulls to £168 from Gerring Partners, heifers to £140 from Crackmoor Farm, Hereford bulls to £192, heifers to £182 from WJ Weeks & Son.

### **DAIRY**

Only a handful of Black & White bulls forward and ARLA bulls are almost impossible to place.

## **WEEKLY TOP PRICE CALF WINNER!**



**This week's winner of £25.00 for the top priced Continental Sired Bull under 41 days was a Limousin to £332 from PHG Turner.**

Next week's calf prize will be for a TOP PRICE Holstein/Friesian.

**Sponsored by Howard & Sons**  
**Dealers for Kubota, Nugent & Ritchie**  
**Devizes Wiltshire SN10 5SQ Tel: 01380 723986**





# Shape the future of dairy

Have your say on the vital support we offer  
Register **now** at [ahdb.org.uk/shape-the-future](https://ahdb.org.uk/shape-the-future)

**AHDB**



## Help us Shape the Future of dairy

We're inviting levy payers to register with us to have a say on the vital work we do to support farming.

Registration is quick and easy – visit <https://ahdb.org.uk/shape-the-future> and fill in some basic details. Once we've checked these, we will contact them again in April 2022 when it's time to get their views.

We want as many levy payers as possible to get involved. As a key stakeholder to AHDB, you can help by:

- Encouraging levy payers to register with AHDB and have their say
- Follow our social media channels: Twitter - [@AHDB\\_Dairy](#) & Facebook - [@AHDBDairy](#)
- Like and share our posts or create your own to say why it's important for levy payers to have their say

We are committed to listening to levy payers and industry stakeholders about the challenges they face, and the role that we can play in enabling success in the farming industry. We want to ensure that the levy collected for each sector works hard for the benefit of that sector.

For more information, visit <https://ahdb.org.uk/shape-the-future>.



On farm  
advice from  
our experienced  
technical service  
specialists

FREE GMS &  
HPR ranking

FREE Genetic  
Reviews

Contact us  
today!

Genus

ABS

# PROFIT FROM GENETIC PROGRESS

Somerset Sales and Breeding Advisors:

James Hares- 07738 276211  
John MacDonald- 07971 118852

Dorset Sales and Breeding Advisors:

Megan Edwards- 07772 227991  
Felicity Coates- 07800 914925

Dorset and Somerset Sales and Breeding Advisors:

Rosie Bloor- 07929 182394  
Lottie Hill- 07772 227969

# Wadland Finance

your rural finance specialist

## LIVESTOCK LOANS

Specialist funding for  
livestock purchases of  
Sheep, Beef and Dairy Cattle.



WADLAND FINANCE.....your finance provider in all winds and weathers



Proud to support  
British Farming



Mobile 07825 152306 T: 01242 890524  
Email: [andrew.wadland@btconnect.com](mailto:andrew.wadland@btconnect.com)  
[www.wadlandfinance.co.uk](http://www.wadlandfinance.co.uk)

# FRIDAY 11<sup>th</sup> NOVEMBER 2022

## STORE CATTLE

**TOTAL  
HEAD  
SOLD  
709**

**Starts 10.30am**

**AUCTIONEERS:**

**TREVOR ROWLAND** 07968 480 401

**ROSS WHITCOMBE** 07815 985 737

**LESTER WILLIAMS** 07778 646 031

**STEERS TO £1315**

**HEIFERS TO £1200**

**Frome seeing the strongest trade of the season, with several new buyers in attendance.**

### YOUNG CONTINENTAL

Well, what a day in this section. Many younger suckled Continentals coming through today and a super compliment of buyers too. The day started with a super entry of Blonde x 5-6mo steers & heifers from G Collins (Farms) Ltd. Demand was exceptional with steers well over £700 and heifers to a blistering £672. A number of quality Charolais coming forward with an annual consignment of 50 single suckled 3-5mo steers & heifers presented by Ross & Clare Whitcombe, Glastonbury. Demand was on fire for these best of types with steers peaking at £800 and heifers at £660. Clive House & family continuing to support us with top class stock which saw 11-13mo Charolais steers well over £900 and topped at £1195. While heifers from the same good home at £865. Not too many suckled best Limousin but a few top sorts from PF Best & Son 11mo blasted to an excellent £960 for their steers & heifers to £762. Owen Nelmes & family always breeding the best of sorts (7mo) seeing pens of steers at £800 & £890 and heifers to £725. Well conformed quality Simmentals from PF Best & Son were eagerly sought and at just 11mo were all over £800 and topped at £880. Not too many Dairy x but Blue x 9mo sold well to £720.

### NATIVE

Some super runs of Native cattle with some cracking types forward. Lovely 5-6mo Beef Shorthorn steers flying to £760 from Trevor & Alison Whitcombe, with 6mo heifers flying to £680 from Ross & Clare Whitcombe. Cracking 19mo Sussex steers flew to £845 from Manor of Cadlland. 19mo South Devon steers rocked to £850 from WE Love & Son of Wimborne whose 21mo South Devon heifers rocked to £1040. Best South Devon steers flew to £1315 from WE Love & Son. With best thick Beef Shorthorn heifers soaring to £1200 from CW Butcher & Son

## FRIESIAN

A larger entry of Friesians which sold to a fast trade. Best steers flying to £1225 from P & S Lawson of Chippenham. 5 monster Holstein steers to £1115 from Hann Farming Ltd. Other quality types to £1080 from CV Salmon, £995 from PW CC & JC Gould and £965 from HJ Masters & Son. Well bred British Friesians to £712 from F Pearce & Son with cross bred steers to AJ Portch of Bruton.

YOUNG STEERS				YOUNG HEIFERS			
BREED	£/ HEAD	AGE	VENDOR	BREED	£/ HEAD	AGE	VENDOR
Charolais	1195	14mo	CW House, Lymington	Charolais	865	12mo	CW House, Lymington
Angus	1030	17mo	RC Few & Son, Longbridge Deverill	Blue	820	16mo	CV Salmon, Shepton Mallet
Hereford	990	17mo	J & J Hawkins, Gurney Slade	Limousin	762	13mo	PF Best & Son, Wareham
Limousin	960	12mo	PF Best & Son, Wareham	Angus	745	14mo	RF Stratton & Co, Kingston Deverill
Simmental	880	13mo	PF Best & Son, Wareham	Hereford	740	12mo	S Kitcher, Lymington
Beef Shorthorn	760	6mo	TAH Whitcombe, Glastonbury	Beef Shorthorn	680	6mo	RA & CL Whitcombe, Glastonbury

## ANGUS

Another strong day with several consignments showing well and selling to another fast trade with strong bidding throughout for all grades. Premium prices continue for farm assured and named sired but those not farm assured are still selling to a competitive trade. Fleshed steers wanted and sold well to £1285 (27mo) from Paul Mattick of Chilcompton, £1270, £1258 and £1245 for 3 bunches all 21mo from MF Green of Salisbury, £1225 from Pete & Sue Lawson of Chippenham and £1215 from Roger Masters & family of Shepton Mallet. Good rearing steers also keenly sought from £1030 to £1125 (17mo) from Martin & Paul Few, £970 from Norridge Farms, £878 from Evershot Farms Ltd and £870 (18mo) from Vic & Anita White of Yeovil. Yearling steers sold to a highlight of the day with 50 Dairy cross steers from RF Stratton & Co of Warminster selling from £770 (14mo) and topped at £818 (14mo) for 2 bunches. Other good yearling steers sold to £790 (13mo) from Mells Park Estate. Their good bulling heifers also met a strong demand to £970 (18mo). Other heifers with bulling potential also wanted and topped at £1025 from Evershot Farms Ltd and equally at £970 from DO Webb. Several more sold from £900 to £940 from CV Salmon, G & R House Ltd and FF & J Down. Yearling heifers met a massive trade with 50 Dairy crosses from RF Stratton & Co of Warminster selling from £725 to £745 (14mo).

## HEREFORD

A good selection of Herefords on offer today with generally younger steers forward selling well to £1095 (24mo) from Paul Mattick, £935 to £990 (17mo) from John Hawkins and £955 from VL Vincent & Son. Other younger steers also met fast bidding from £840 from AJB Farming of Chippenham to £860 (15mo) from MC Gibbs of Wells and £700 (only 9mo) from MW & LJ Baker. Quality heifers from John Hawkins topped at £1150 (19mo) and his others to £975. Heifers with bulling potential sold well to £900 from VL Vincent & Son and yearling heifers a highlight to £740 (12mo) from Sheila Kitcher from the New Forest.

## FORWARD CONTINENTAL

Quality wanted and continues to sell to a strong premium. The excellent younger consignment from Charlie Butcher of Devizes met the fastest trade with his Simmental steers selling well from £1270 to £1278 all 19mo. Good conformation young Charolais steers equally wanted to £1195 (only 14mo) from Clive House of Hampshire and well reared Limousins steers also keenly sought to £1095 (21mo) from Roger Carpenter. More heifers on offer from Charlie Butcher also sold to a premium with Simmental heifers selling from £1160 to £1175 and topped at £1188 all 19mo. Quality reared Blue heifers wanted and sold to a fast trade topping at £1175 (28mo) from regular vendor Pete Gould & family of Warminster. Simmental heifers with bulling potential wanted and sold well from £970 to £1005 all from Graham, Marcus & Rose House. Good Limousin heifers with bulling potential met fast bidding from £870 to £925 from VL Vincent & Son of Weymouth and £870 (22mo) from DO Webb of Stratton on the Fosse. Younger Blue bullers also sold well to £820 (16mo) from CV Salmon of Shepton Mallet and £795 (20mo) from Evershot Farms Ltd. Many more could be sold on this fast trade.

FORWARD STEERS				FORWARD HEIFERS			
BREED	£/ HEAD	AGE	VENDOR	BREED	£/ HEAD	AGE	VENDOR
South Devon	1315	21mo	WE Love & Son, Wimborne	South Devon	1200	34mo	WE Love & Son, Wimborne
Angus	1285	27mo	PJ Mattick, Chilcompton	Beef Shorthorn	1200	25mo	CW Butcher & Son, Devizes
Simmental	1278	19mo	CW Butcher & Son, Devizes	Simmental	1188	19mo	CW Butcher & Son, Devizes
Friesian	1115	18mo	Hann Farming Ltd, Frome	Blue	1175	28mo	PW CC & JC Gould, Warminster
Hereford	1095	24mo	PJ Mattick, Chilcompton	Hereford	1150	19mo	J & J Hawkins, Gurney Slade
Limousin	1095	21mo	R Carpenter, Pensford	Angus	1025	26mo	Evershot Farms Ltd, Dorchester



**Don't forget Frome Fatstock Show 30<sup>th</sup> November, various classes, schedule available, entries close 23<sup>rd</sup> November.**

## **Chaplain's Prayer**

"Let the Land produce living creatures according to their kinds: Livestock, creatures that move along the ground birds and wild animals...v26: Let us make man in our image, in our likeness, and let them rule over all the creatures.V29: I give you every seed bearing plant, and every tree that bears fruit with seed in it...also all the beasts of the earth and birds of the air for your food!"(From Genesis Ch 3)



As a farmer I was always in awe of these words and our special responsibilities in the eyes of God...to respect and care for his creation!!

The UK Government has this month announced a fund of £160k to protect England's much loved island sea bird population against invasive predators (which can in many cases include us too!) Ground nesters are particularly vulnerable..puffins, razorbills, gannets, terns, petrels etc. This is significant ahead of UN's CBD and COP in Montreal, as it sets the UK government as World leaders in Biosecurity 😊

From Biosecurity to Biodiversity...

The latest (7<sup>th</sup>) round of the popular Countryside Stewardship facilitation opened on 7 November, giving groups of Farmers and Landowners the opportunity to work together and share knowledge to protect and enhance the local environment. The £2.5 fund is an important part of the RPA aim to support agriculture and rural communities, restoring Habitats for wildlife and improving Biodiversity! 180 groups with over 4k members have benefited to date.

Let's be aware that as Stewards of Almighty God's Creation, we must 'look out' for ourselves and each other too!? Here are the three main organisations to contact if you need help at all!: FCN call 03000 111 999; [help@fcn.org.uk](mailto:help@fcn.org.uk) ; RABI 0808 281 9490; Samaritans 116 123 email [jo@samaritains.org](mailto:jo@samaritains.org)

I am too, as Chaplain to Frome Livestock market always available for a chat.. whether at the market or on phone(07880770887)

Have a Blessed week!

Neville Dyke



**BRIARWOOD  
SUPPLIES**

Unit 7 Works 22, Bennett Road,  
Highbridge, TA9 4PW

## FIBRE CEMENT PROFILED SHEETS & ROOFING SOLUTIONS

We are now open to the trade and public in the South West offering reliable nationwide next day courier delivery as well as collection from our Highbridge depot.

## BROWSE OUR RANGE OF PRODUCTS

- |   |  |
|---|--|
|  EUROFIX               |  ZED PURLINS          |
|  EUROFIVE              |  STEEL SECTIONS       |
|  FIBRE CEMENT FITTINGS |  PVC DRAINAGE SYSTEMS |
|  METAL PROFILE SHEETS  |  TOOLS & HARDWARE     |



*Hunter Plastics and PVC Underground Products available to purchase on-site*

*The cheapest metal profiled sheets available in two different colours*

*Using our own in-house delivery network we can deliver anywhere in the UK*



[briarwoodsupplies.co.uk](http://briarwoodsupplies.co.uk)



01278 496 600



Residential



Rural



Planning

**Retained Bank Valuers for  
Lloyds, Barclays, AMC, Oxbury & Handlesbanken  
call Tim Hector 01373 831010**

**OUR OFFICES**

Bridgwater 01278 455255  
Castle Cary 01963 350327  
Cheddar 01934 740055  
Frome 01373 455060  
Wells 01749 676524

Glastonbury 01458 831077  
London 02078 390888  
Midsomer Norton 01761 411010  
Standerwick 01373 831010  
Commercial 0345 034 7758

Street 01458 840416  
Warminster 01985 215579  
Shepton Mallet 01749 372200  
Wedmore 01934 713296  
Salerooms 01373 852419

**COOPER  
AND  
TANNER**

**Farm • Commercial • Property • Fleet • Personal • Motor**



**Cornish Mutual**



**We've been insuring the farming community in  
Cornwall, Devon, Somerset and Dorset for more than 115 years.**

0345 900 1288 | [askus@cornishmutual.co.uk](mailto:askus@cornishmutual.co.uk) | [www.cornishmutual.co.uk](http://www.cornishmutual.co.uk)







**PAT TOMLINSON**  
ACCOUNTANCY

## BRINGING FARM ACCOUNTS TO LIFE



Accountancy • Tax • Management accounting • Budgeting • VAT  
Strategic financial advice • Representation with banks • Expert witness work  
Making tax digital • Xero Partner • Payroll

[enquiries@ptaccountancy.co.uk](mailto:enquiries@ptaccountancy.co.uk) | [www.ptaccountancy.co.uk](http://www.ptaccountancy.co.uk) | 01823 792450

TO CLAIM A **FREE MUG** FILL OUT THE FORM AT:  
[offers.roxan.co.uk/auction-markets](http://offers.roxan.co.uk/auction-markets)



**SWITCH &  
UPGRADE**

No compromise on quality, choice, service or support  
when you Switch & Upgrade to any product lines from  
ROXAN.



### SHEEP TAGS

+ FREE REPLACEMENTS



### CATTLE TAGS

+ FREE REPLACEMENTS



### & MORE!



**JOHN SYMONDS**  
07766 221 011  
[john.symonds@datamars.com](mailto:john.symonds@datamars.com)  
South/South West

**ROXAN**

[www.roxan.co.uk](http://www.roxan.co.uk)

FOLLOW US: 